

# Transbay Program Downtown Rail Extension

Mission Bay Citizens  
Advisory Committee

October 13, 2022



# TRANSBAY JOINT POWERS AUTHORITY (TJPA)

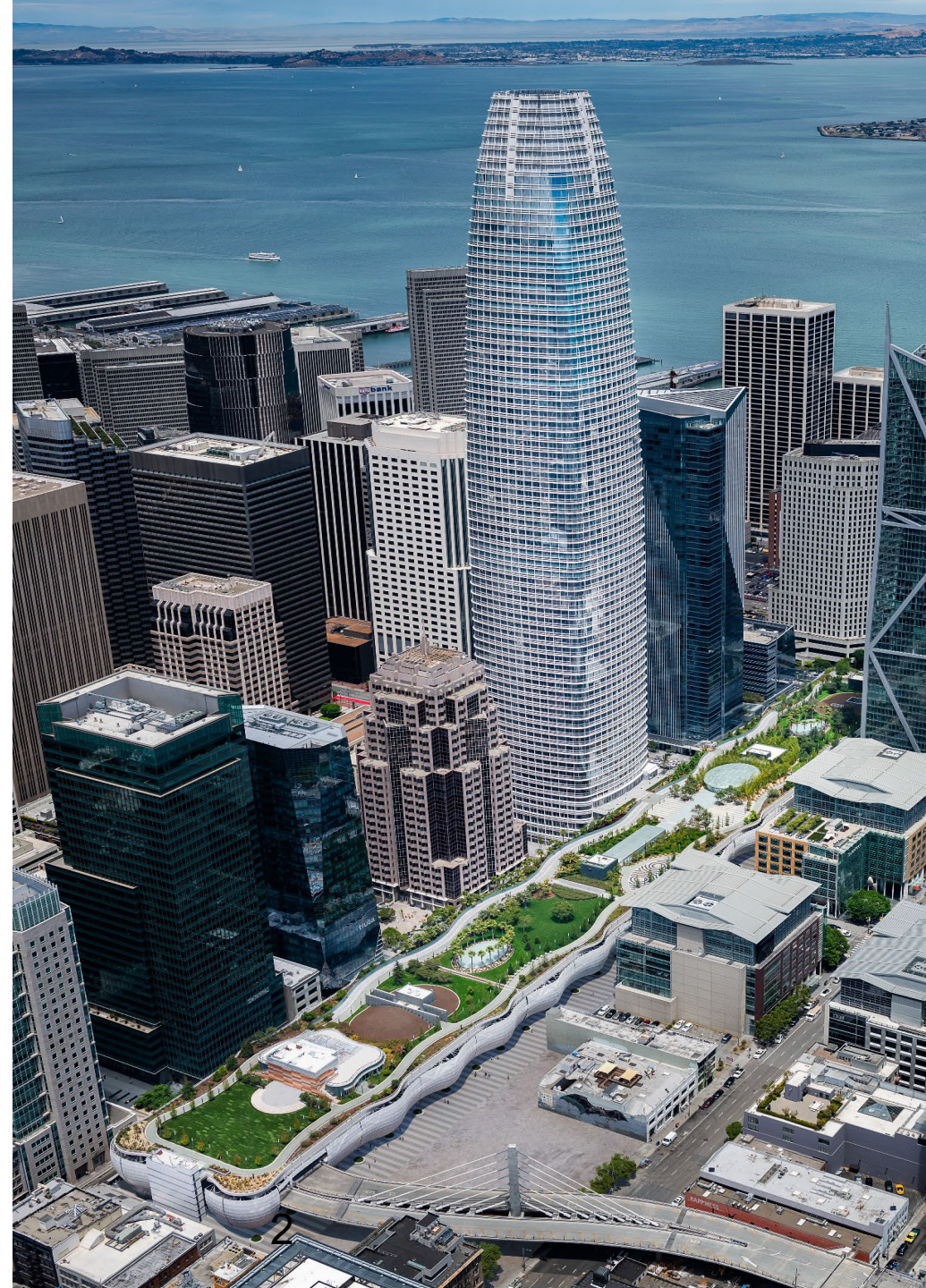
Owner and operator of the Salesforce Transit Center, and 5.4 acre Rooftop Park in the heart of downtown San Francisco

In 1999, City voters approved a ballot measure to extend the northern terminus of Caltrain from south of downtown to a new transit station at the site of what was the existing Transbay Terminal

- TJPA was created under State law in April 2001
- The agency is charged with design, construction and operation of a new transit center and associated facilities

## Joint Powers Authority Member Agencies

- City & County of San Francisco
- Alameda-Contra Costa Transit District
- California High Speed Rail Authority
- Caltrans (CA State Dept. of Transportation)
- Peninsula Corridor Joint Powers Board
  - City & County of San Francisco
  - San Mateo County Transit/Caltrain
  - Santa Clara Valley Transportation Authority



# TRANSBAY PROGRAM



1. Replace former Transbay Terminal with a multi-modal Transit Center
2. Create a transit-oriented neighborhood featuring housing (35% affordable housing), open space, offices and shops
3. Extend Caltrain and California High Speed Rail service into downtown San Francisco



Transbay Project Area (Before)



Transbay Project Area (After)

# Phase 1 - \$2.25B Transit Center Complete



*Multimodal six story facility in downtown San Francisco. Below grade two-story train box completed with \$400M in American Reinvestment & Recovery Act funding.*

# Transit Center

## Jobs Across the United States of America

### Washington

Thompson Metal, Vancouver  
Steel Columns & Transfer Girders  
Insulfoam, Puyallup  
Insulation  
McClean Iron Works, Everett  
Steel Frames

### Idaho

Base Line Irrigation, Boise  
Irrigation Products

### Oregon

Marks Metal Tech, Clackamas  
Rolling & Metal Forming  
Oregon Sandblasting, Tualatin  
Metal Prep & Coating  
Oregon Iron Works, Clackamas  
Girders, Basket Columns  
American Steel, Portland  
Supply Steel Plates

### California

Gerdau, Napa /San Diego/Long Beach  
Reinforcing Bars  
XKT Engineering, Vallejo  
Cruciform SLRS Vertical Members  
Bratton Masonry Inc., Fresno  
Masonry  
Mageba, San Jose  
Pendulum Bearings  
ISAT, La Mirada  
Seismic Anchors  
TWI, Los Angeles  
Curtain Wall Steel Frames  
Harris Rebar, Livermore  
Reinforcing Bars  
Pacific Erectors, Rocklin  
Reinforcing Bars  
The Herrick Corp, San Bernardino  
WF Shape, SLRS Steel Members  
DYWIDAG-Systems, Long Beach  
Reinforcing Bars/HS Rods  
NMI Industrial, Sacramento  
Steel for Stairs  
Desert Mechanical, Sylmar  
HVAC, Plumbing  
Mason Industries Inc, Anaheim  
Seismic bracing and Isolation

### Montana

Mikrolab, Bozeman  
Power Splitters/Couplers

### Wyoming

Baroid, Colony  
Slurry for CDH Piles

### Nevada

Performance Pipe, Reno  
Geothermal System  
Southwest Specialty,  
Las Vegas  
Metal Ceilings

### Kansas

Bradken, Atchison  
Large Steel Shapes  
Vioga, Wichita  
Pipe Fittings



### Colorado

Rail Service Corp, Lakewood  
Transit Communications Systems  
Johns Manville, Denver  
Insulation Systems

### Arizona

Stinger Bridge & Iron, Coolidge  
Cable Stay Steel Plates  
Coyote Steel, Fountain Hills  
Steel Beams for Falswork  
Clayton National, Scottsdale  
Fireproofing  
Vinyltech Corp, Phoenix  
PVC Pipes

### North Dakota

GP&K Products, Fargo  
PVC Pipe Fittings

### South Dakota

Daktronic Inc, Brookings  
Bus Ramp Changeable Message Signs

### Nebraska

G4S Technology, Omaha  
Security Systems  
Diamond Plastic, Grand Island  
PVC Pipe

### Missouri

Bradken, St. Joseph  
Cast Nodes  
Architectural Systems, Monett  
Metal Panels  
Carboline, St. Louis  
Performance Coatings  
H.E. Williams, Carthage  
Light Mountings  
Bull Moose Tube, Chesterfield  
Mechanical & Structural Tubing

### Utah

Star Seismic, Salt Lake City  
Seismic Braced Frames

### New Mexico

Insight, Rio Rancho  
LED Lighting

### Oklahoma

Hilti, Tulsa  
Firestop Products, Anchors

### Texas

Encore Wire, McKinney  
Grounding Cable  
VSL, Fort Worth  
Cable Stay Bridge  
Joy Global, Longview  
Special Fabrication  
Wyman-Gordon, Houston  
Light Column Rings  
De Neef, Houston  
Waterstops

### Louisiana

Bradken, Amite  
Steel Shapes, Cast Nodes  
Gordon Inc, Bossier City  
Metal Ceiling Design  
Fiber Soils, Baton Rouge  
Landscaping Materials

### Mississippi

ARA, Vicksburg  
Engineering Services

### Minnesota

Innovent, Minneapolis  
Indoor Air Handling Unit  
Valspar, Minneapolis  
Extrusion Coatings  
Twin City Hose, Rogers  
Flexible Metal Hose

### Iowa

EFCO Corp, Des Moines  
Concrete Forms  
Elco Const., Decorah  
Metal Fasteners, Anchors  
Viking Pump, Cedar Falls  
Pumps

### Illinois

Delta Structures Inc, Addison  
Space Frame Design & Fab  
Scot Forge, Spring Grove  
Forged Pins  
Circle Metal Specialties, Alsip  
Custom Steel Design & Fab  
Allied Tube & Conduit, Harvey  
Rigid Steel  
Larson Engineering, Chicago  
Curtain Wall Engineering

### Kentucky

General Cable, Highland Heights  
Highland Heights  
Electrical Cable  
Republic Conduit, Louisville  
Electrical Conduit

### Michigan

Williams Form Eng, Belmont  
Supply HS Rods  
Ward Connector, Holland  
HVAC Components

### Indiana

Crown Core, Gary  
Curtain Walls/Awning  
RACO, South Bend  
EMT Fittings  
Nibco, Elkhart  
Flow Control Products  
Thermafiber, Wabash  
Mineral Wool Insulation

### Wisconsin

Wisconsin Centrifugal,  
Waukesha  
Spun Cast Pipes  
Weil Pump Co, Cedarburg  
Water Heaters/Controls

### Ohio

Lincoln Electric, Euclid  
Welding Wire & Machines  
Metal Tek, Sandusky  
Spun Cast Pipe  
Artco, Hannibal  
Steel Plates  
The Dyson Corp, Painesville  
HS Rods  
Picoma Industries, Cambridge  
EMT Elbows, Steel Conduit  
Columbia Eng, Rubber, Vandalia  
Rubber Bellows  
Clark/Dietrich, West Chester  
Steel Framing

### Maine

Woods End Labs, Mt Vernon  
Analytical Soil Testing

### New Hampshire

Burndy, Manchester  
Pipe Compression Connections

### New York

Hohmann & Barnard, Hauppau  
Waterproofing  
Watson Bowman Acme, Amherst  
Structural Sealing Joint System  
Karp Assoc Inc, Melville  
Access Doors

### New Jersey

Barrett Roofs, Millington  
Waterproofing  
Sika Corp, Lyndhurst  
Waterproofing

### Maryland

US Bulletproofing, Hyattsville  
Glass Doors  
Larsen Products, Jessup  
Concrete Bonding Agents  
Elbco, Owings Mills  
Elevator Roller Guides

### Delaware

Evanz Claymont, Claymont  
Steel Plates

### Virginia

Hapco Pale, Abingdon  
Light Poles  
Koster, Virginia Beach  
Waterproofing

### N. Carolina

Schindler, Clinton  
Escalators  
Nucor, Coxford  
Steel Plates  
Galvan Ind., Inc, Harrisburg  
Grounding Rods  
Austin Elec., Yadkinville  
Grounding Rods

### S. Carolina

Otis, Florence  
Escalators  
Apollo Valves, Pageland  
Valves

### Massachusetts

Berry Plastics, Franklin  
Waterproofing  
Samafi, Canton  
Waterproofing

### Rhode Island

APC, West Kingston  
Uninterrupted Power Supply  
Bridgeport, Stratford  
Electrical Fittings

### Connecticut

United Tech. Co., Farmington  
Security Systems  
Belimo, Danbury  
Actuators

### West Virginia

American Airworks, Sophia  
Breathing Air Systems

### Pennsylvania

Ward Mfg, Blossburg  
Pipe Fittings  
ArcelorMittal, Coatesville  
Steel Plates

### Chapel Steel, Pottstown

Steel Plates  
ESAB, Hanover  
Welding Materials

### Wheatland Tube Co., Scranton

Conduit Locknuts, Bushings  
PPG Industries, Pittsburgh  
Industrial Coatings

## Total Jobs Created

Local: 13,508\* | Beyond SF Bay Area: 10,550

Cities: 500+ | Companies: 900+

Off-site Jobs Created

500 200 100

\* Jobs created in the San Francisco Bay Area from demolition of the old Transbay Terminal, construction of the Temporary Terminal, Transit Center and Bus Ramp.

# Key Regional Connector

Transit center currently connects nine regional and local transit systems, providing job, housing and regional access from the East Bay to the Peninsula and South Bay.

Phase 2 will connect Caltrain and CA High Speed Rail down the peninsula and all the way to Anaheim.





# Phase 2: Key Regional Rail Connection



- Closes the gap to downtown San Francisco, enabling the Salesforce Transit Center's full potential
- Creates an essential link in the mega-region and state's rail network to improve mobility
- Linchpin for realizing the Link21's New Transbay Rail Crossing, DTX would be first phase of standard-gauge connection
- Improves sustainability and environmental quality
- Creates jobs for underrepresented groups through SBE, DBE, and veterans' programs

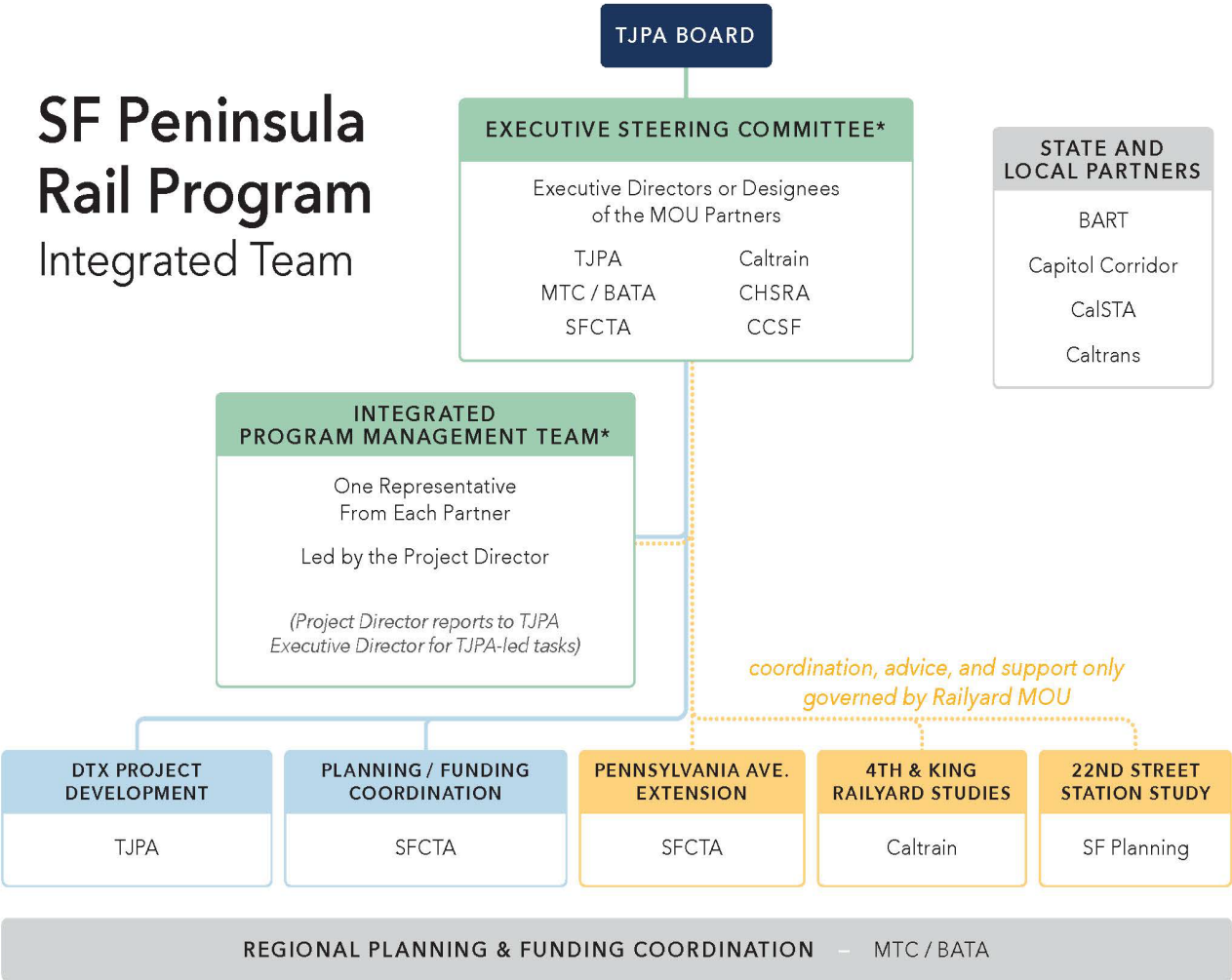
# Passenger Benefits



- Estimating 90,000 riders per day\*
- Will allow California High-Speed Rail to provide a one-seat ride between San Francisco and Los Angeles
- Promotes seamless transfers between transit services at and near the transit center, including BART, Muni, and buses serving the East Bay, North Bay and other regional and long-distance destinations
- Increases access to public transportation in an area of the city with highest expected population growth over the next 30 years
- Project traverses 3 census tracts designated as Historically Disadvantaged Communities and is within a half mile of an additional seven census tracts that are designated as both Historically Disadvantaged Communities and Areas of Persistent Poverty.

\* Average of Caltrain, CHSRA, and TJPA ridership estimates

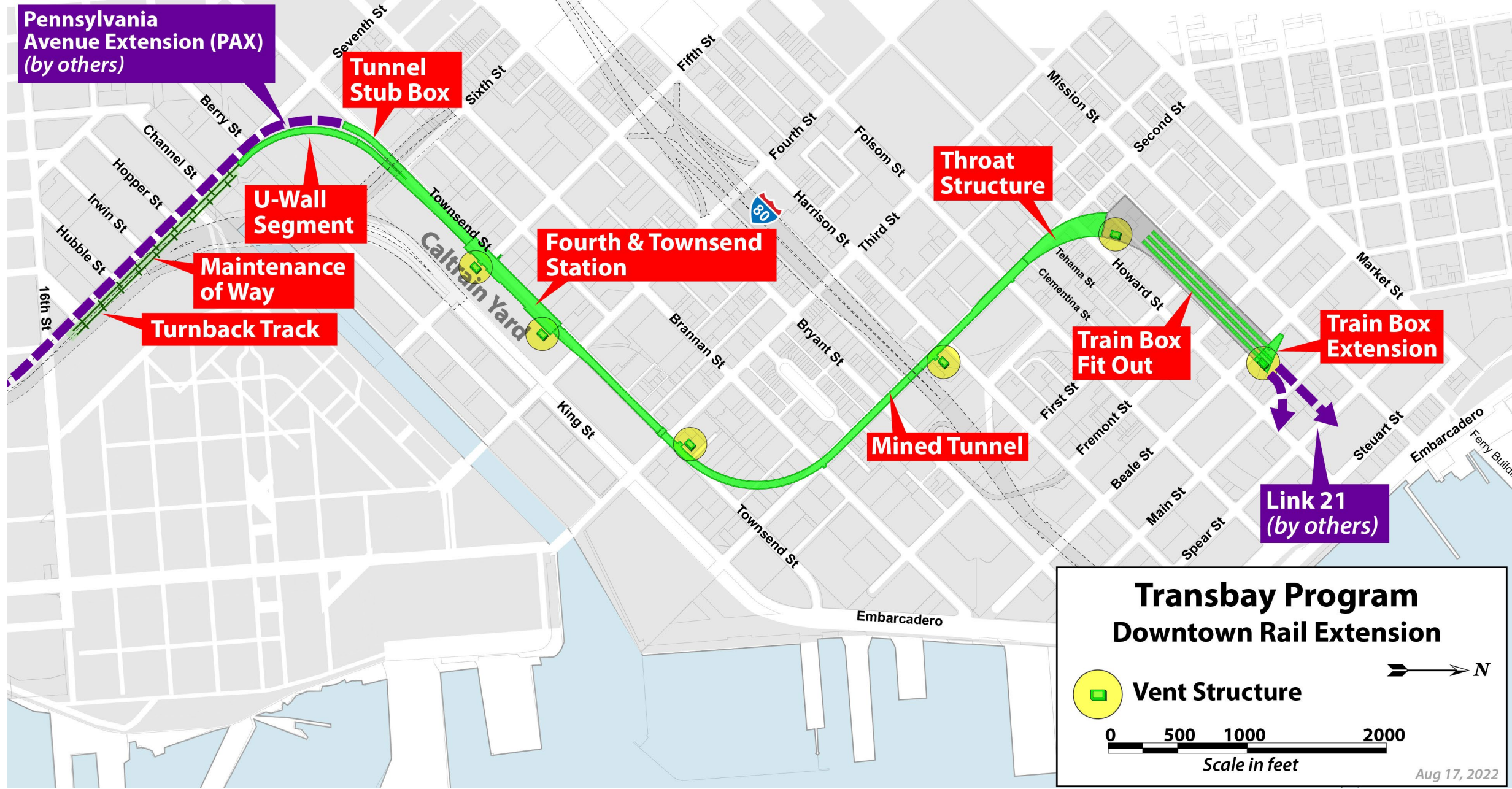
# SF Peninsula Rail Program Integrated Team



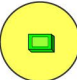
## Member Agencies


- Transbay Joint Powers Authority - lead
- Metropolitan Transportation Commission
- California High-Speed Rail Authority - operator
- Peninsula Corridor Joint Powers Board Caltrain - operator
- City and County of San Francisco
- San Francisco County Transportation Authority

\* Consistent with and limited to the Summary Work Program (Attachment 2) defined by the San Francisco Peninsula Rail Program MOU approved by TJPA Board on April 9, 2020



**Transbay Program  
Downtown Rail Extension**

 **Vent Structure**

 N

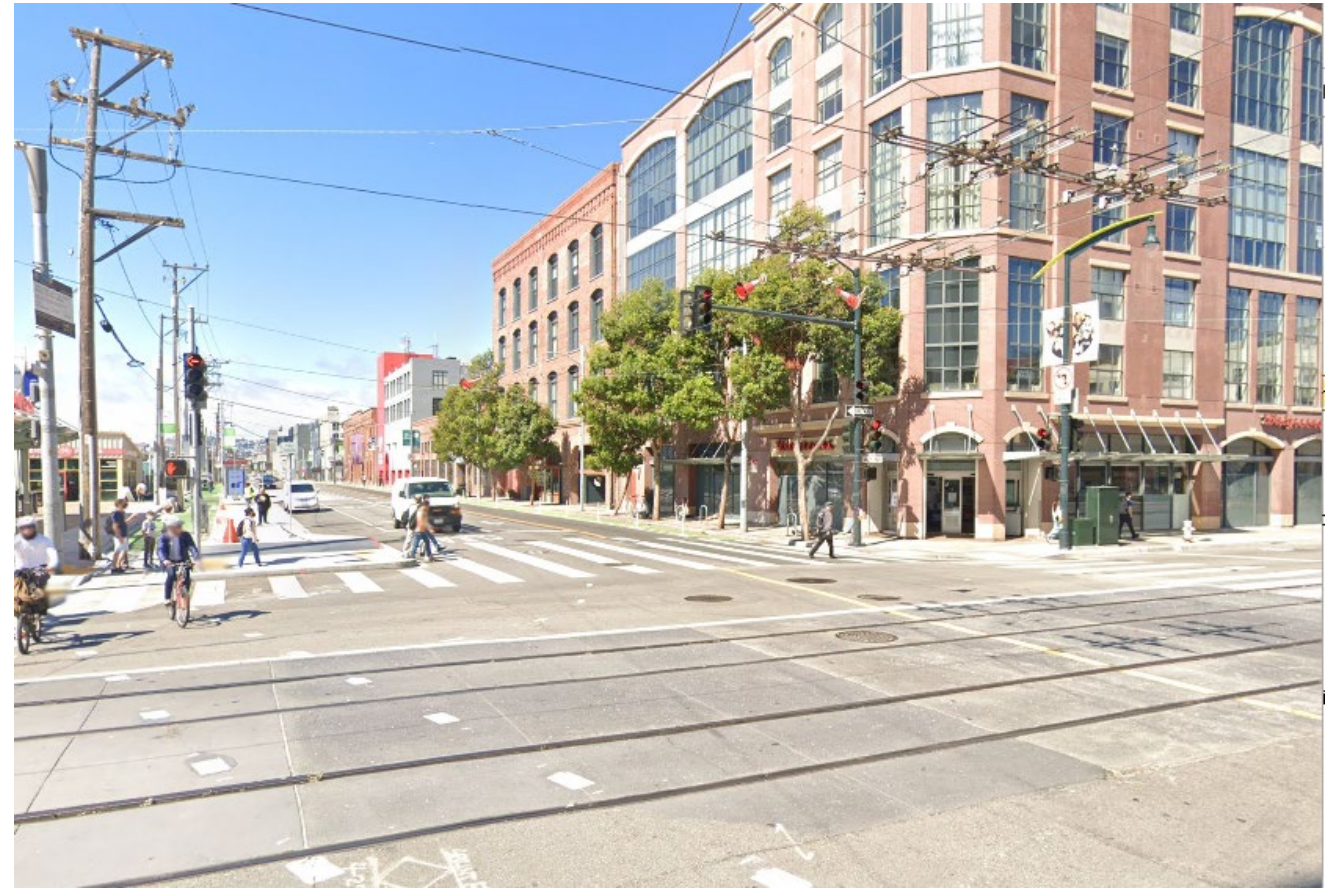
0 500 1000 2000  
Scale in feet

Aug 17, 2022

# Fourth & Townsend Street Station

## Station Details

- New underground station in public right of way (Townsend street)
- Shared tracks with Caltrain and High-Speed Rail
- Adjacent project to Caltrain Electrification, SF Railyards, Pennsylvania Avenue Extension, and Folsom Area Sewer Improvement projects



# Funding This Transformational Project

~\$1 billion

## Committed Funds

- Mello Roos Special Tax & Impact Fees
- Tax Increment
- Land Sale Revenue
- Regional Transportation Improvement Program (RTIP)
- Regional Measure 3
- Prop K Sales Tax

~\$3.5 - 4 billion

## Planned Funds

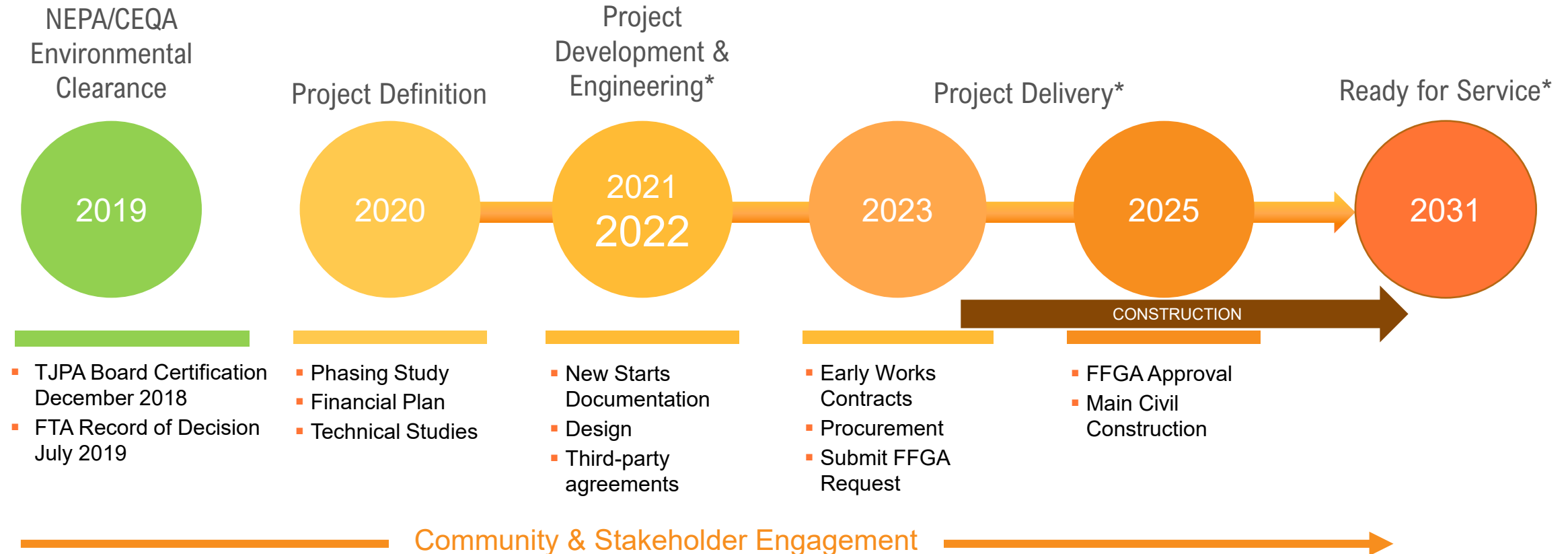
- FTA New Starts
- HSR Program Funds
- California State Rail Discretionary Funds
- San Francisco Local Measure (e.g., Sales Tax Reauthorization)
- Passenger Facility Charge or Train Slot Fee

~\$0.5 - 1 billion

## Additional Sources

- Federal
- State
- Regional
- Local

# DTX Milestones



# Next Steps



- Continue to apply for federal, state, regional and local funding
- Update Cost Estimate end of Year
- Submit FTA CIG funding agreement by Aug 2023
- Complete 30% Design
- Execute public outreach and engagement as the project advances



# Center Renderings





# Questions?

Adam Van de Water  
[avandewater@tjpa.org](mailto:avandewater@tjpa.org)

**TJPA**  
TRANSBAY JOINT POWERS AUTHORITY

425 Mission Street, San Francisco, CA 94105 • 415.597.4620 • [www.tjpa.org](http://www.tjpa.org)