



SFUSD SAN FRANCISCO
PUBLIC SCHOOLS

Mission Bay School

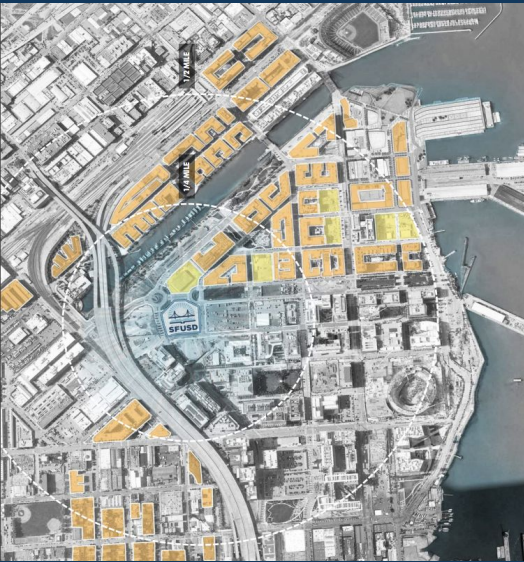


Update to OCII CAC
May 12, 2022

AGENDA

- Site Context
- Schedule
- Development Approvals Update
- Design Presentation
- Questions

Background: Mission Bay School



- **The City is growing.** By 2030, we project an additional 7,000-16,000 students district wide, acknowledging current enrollment decline.
- **New housing development happening on the east side,** from SOMA to the Bayview including redevelopment of formerly industrial areas
- **A site in Mission Bay** has been set aside for donation to SFUSD to build a school as part of the neighborhood redevelopment plan - schools are part of complete neighborhoods
- 2017's Board Resolution No. 172-14A1, "In Support of the Construction of a New School in Mission Bay" initiated school planning process
- We predict the **most need to add more PreK-5 seats** in the district and in the SOMA/Mission Bay/Potrero Hill neighborhoods in particular

NEIGHBORHOOD CONTEXT : MISSION BAY

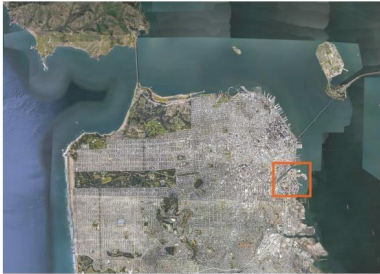
FUTURE SCHOOL SITE



Mission Bay North & South Redevelopment Project Areas

UCSF Campus

Chase Center





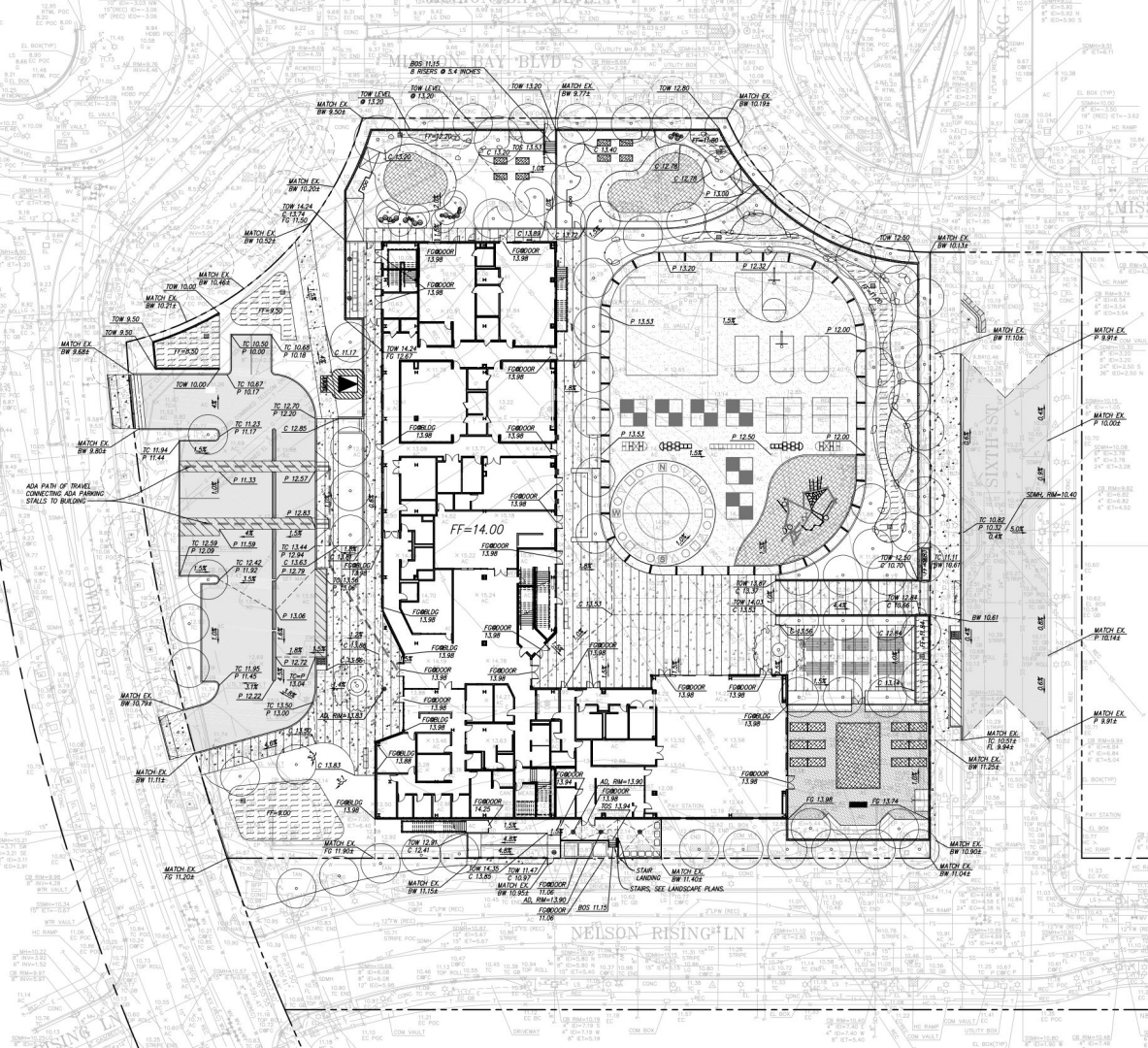
- FLEXIBLE SPACE
- PRE-K YARD
- TK/K YARD

- GRADE 1-5 PE STATIONS
- NATURE EXPLORATION AREA WITH BIOSWALE

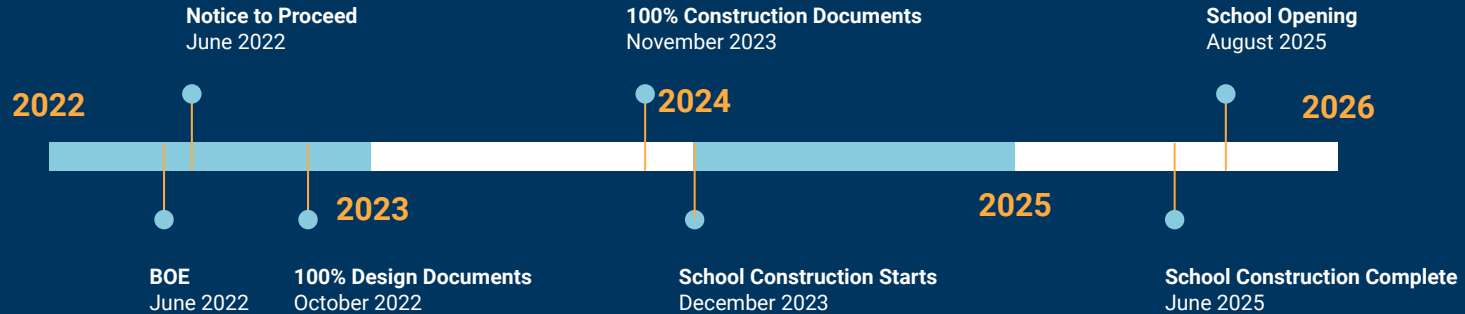
- PICNIC AREA
- GARDEN AREA

Mission Bay School Program

- Pre-K through 5th grade
- Dedicated space for educator professional development
- STEM-focused linked learning hub for high school students



MISSION BAY SCHEDULE



Mission Bay Approvals Summary

Land Disposition Agreement

- Fee transfer of 1.34 acres of land from USCF to SFUSD, as compelled by the Mission Bay Redevelopment Plan.

Easement Agreement

- Easement agreement for 0.25 acres to complete the parcel of Block 14.

California Environmental Quality Act (CEQA)

- SFUSD has prepared an EIR and progressed through all required steps; the EIR is prepared for SFUSD Board of Education adoption

California Department of Education (CDE) Title V Site Findings

- CDE defines site suitability criteria and requires a public hearing and adoption of a findings Resolution by the SFUSD Board of Education

Design-Build Contract

- Culmination of a competitive selection process for a design-build entity to complete design, gain regulatory approval, remediate the site, and construct the project

Future Approvals

- California Department of Education Site Approvals
- Play Yard Reimbursement Agreement

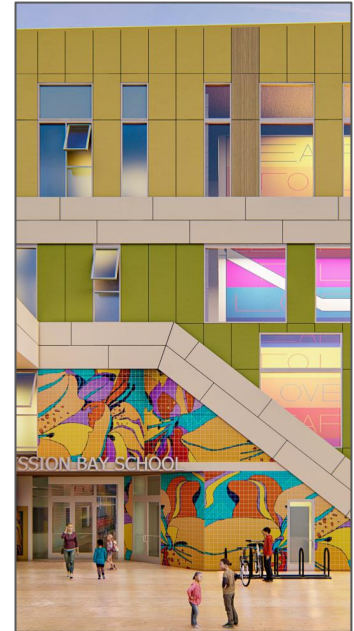
A SCHOOL TO SERVE ITS COMMUNITY

Mission Bay School is designed to be a core focal point in a community of young families. The revised design expresses the joy of learning with dynamic additive forms to help break down a newly aligned and reduced building mass.

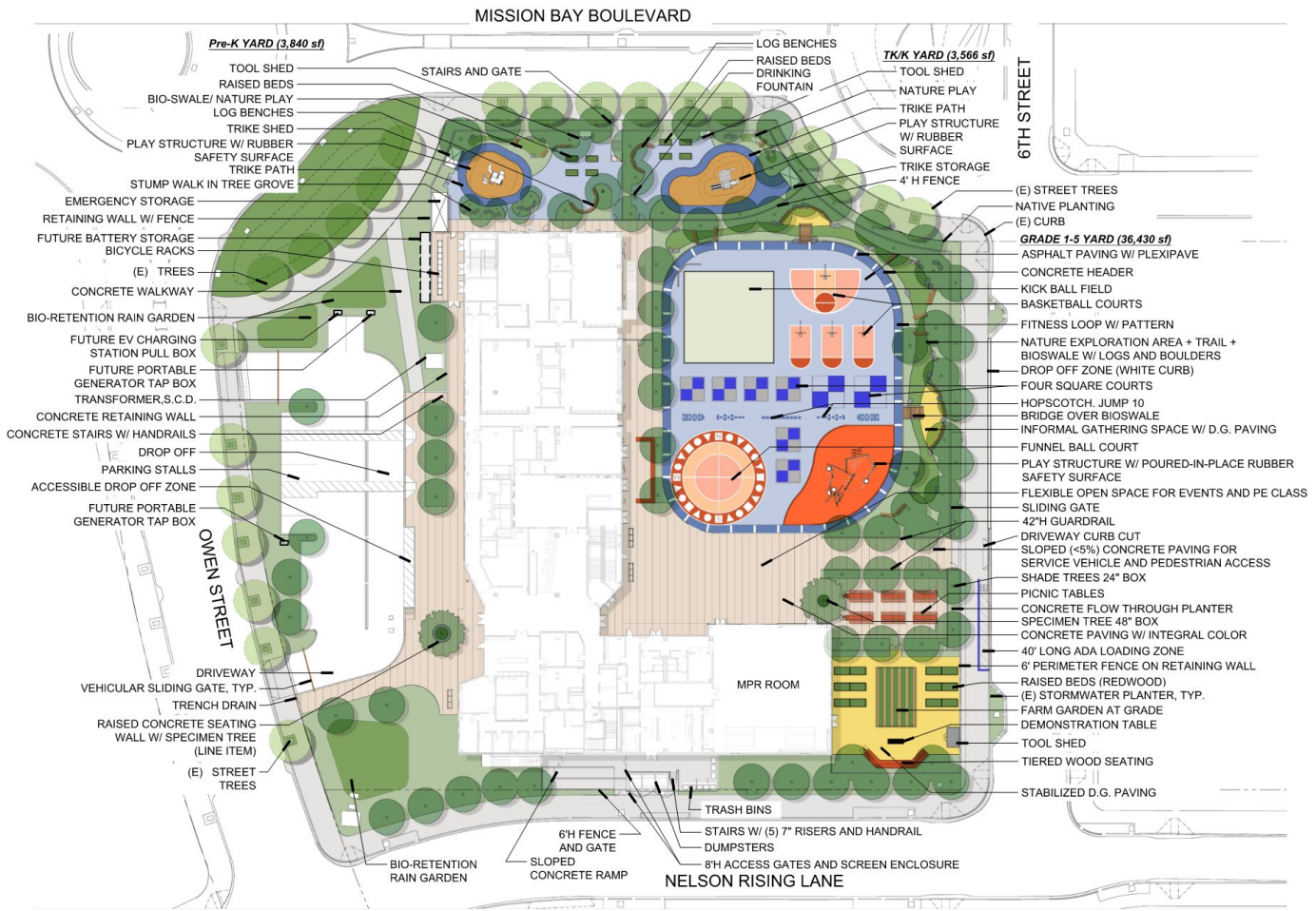
A 24,000 square foot reduction in the size of the building gave the District opportunity to relocate the roof top play area to the ground, creating a larger, more efficient, and safer play area, for easier supervision of students during school activities.

The newly aligned L-shaped form strategically places transparent stairs and entrances in locations visible from the exterior, illustrating graphics that encourage movement, and nighttime illumination will serve as a beacon for the community.

Revisions to the exterior finish provide the District with high quality, low maintenance surface while still complimenting the Mission Bay community and offering larger “canvases” for professional public art to vividly communicate to the community that this is their school.



Design Site plan



Design Exterior Elevations



WEST ELEVATION

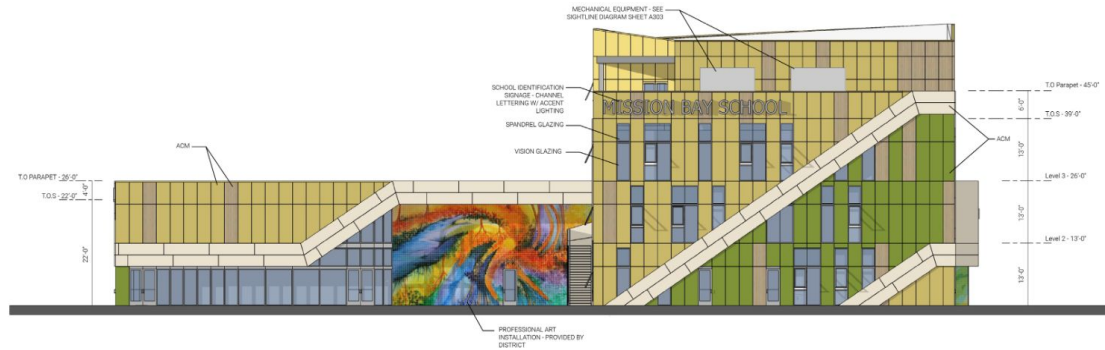


SOUTH ELEVATION

Design Exterior Elevations



EAST ELEVATION



NORTH ELEVATION

Design Aerial



Design Community Entrance



Design Playgrounds



Design Playgrounds & Fencing



Questions?

Licinia Iberri
Bond Program
Manager
iberril@sfusd.edu

