

STORMWATER PUMP STATION NO. 3 AT MISSION CREEK PARK SOUTH – PARCEL P1

**MISSION BAY CAC – CONSTRUCTION UPDATE
8.14.2025**



4TH & CHANNEL at Park P1 - EXISTING CONDITION

P1 - EXISTING CONDITION



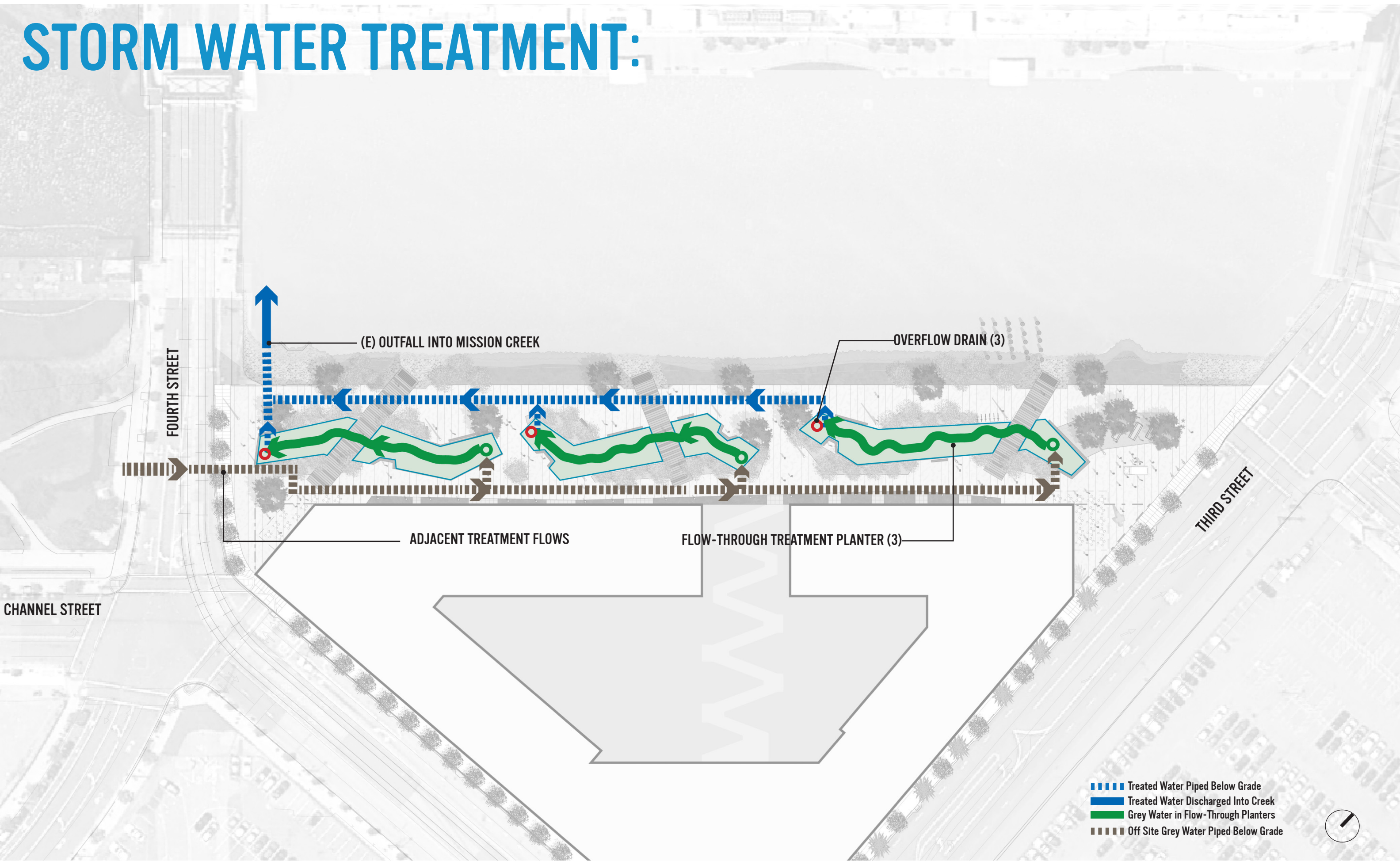
CHANNEL STREET

4TH STREET

SITE PLAN:



STORM WATER TREATMENT:



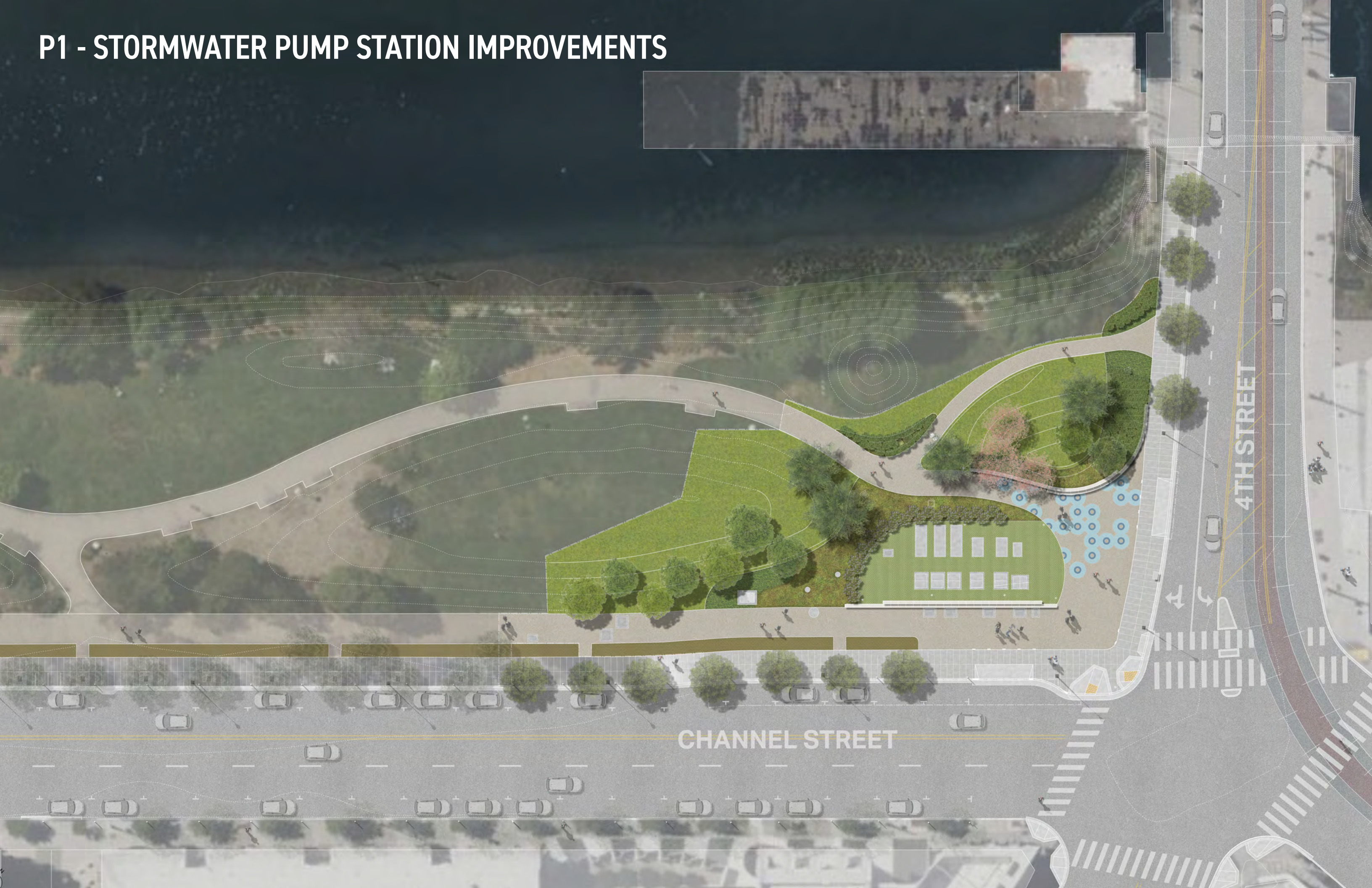
P1 - EXISTING CONDITION



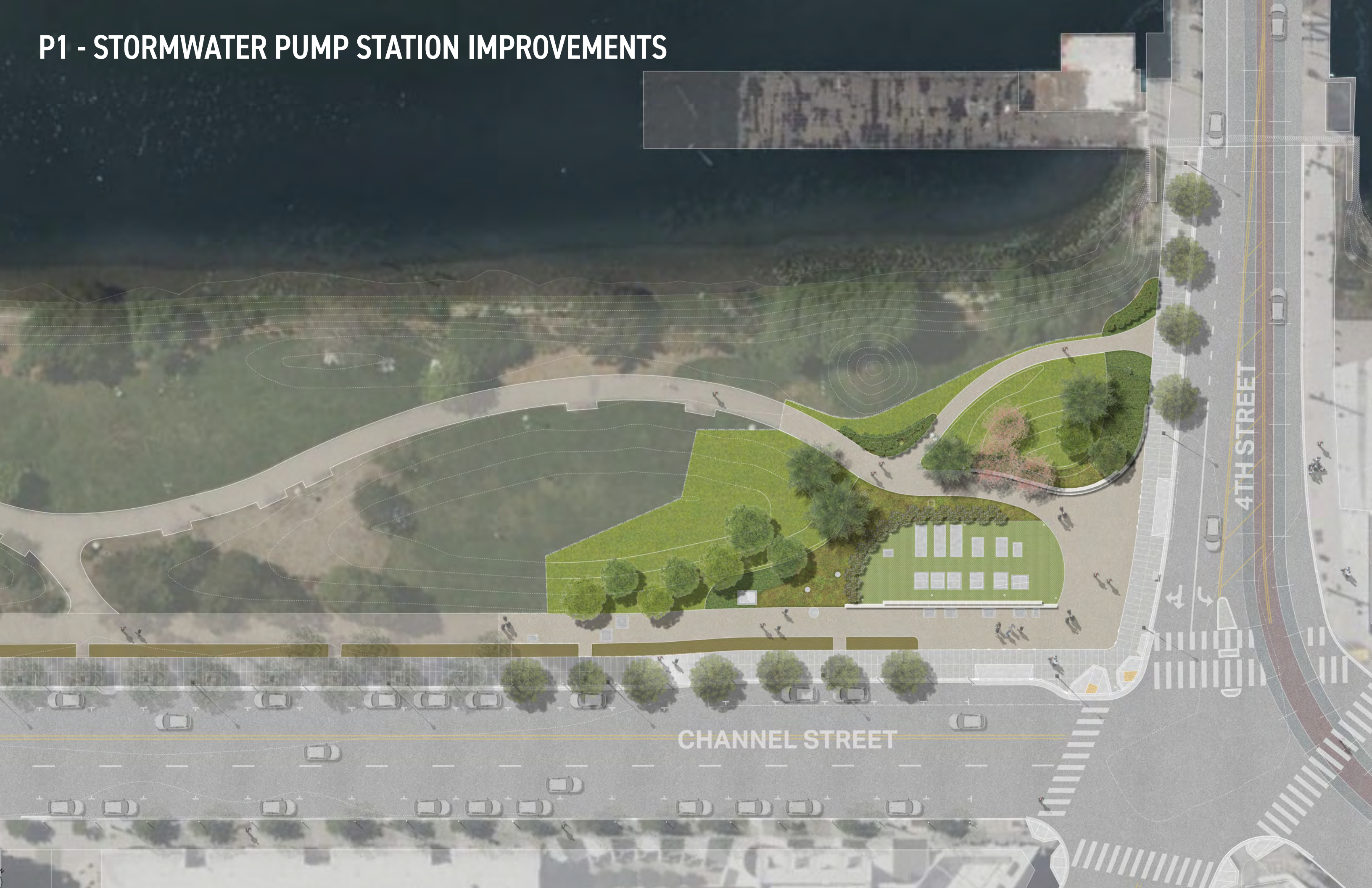
CHANNEL STREET

4TH STREET

P1 - STORMWATER PUMP STATION IMPROVEMENTS



P1 - STORMWATER PUMP STATION IMPROVEMENTS



THANK YOU!

Construction concerns?
Tolio_Ybarra@TMI-CM.com