

San Francisco Police Department Boundary Analysis Services



SF CODE 2A.86 FOR BOUNDARIES OF POLICE DEPARTMENT DISTRICT STATIONS



Goal is to maximize effectiveness of police operations and efficient use of resources

SF 2A.86 - Data Elements

1

Population

Decennial Census and ACS Data

2

Non-Resident Population

Visitors/Day Time Workers

3

Proposed Development

New Planned Developments

4

Landscape Features

Major Streets, Parks, Waterways

5

Communities

Neighborhoods/Communities

6

Children/Youth & Elderly

Areas of High concentration

7

Policing Activities

Calls for Service/Incidents/Arrests

8

Staffing Requirements

At risk areas; special needs areas

9

Capacity

Station & Staffing capacity

10

Community Input

11

Other relevant factors as determined by the Police Commission and the Chief.

PREVIOUS BOUNDARY ANALYSES

2008	2015
<ul style="list-style-type: none">• Part of three prong study (Boundaries, Capital, Foot Patrol)• Desire for greater police presence (patrol and staffing)• High customer engagement → Varied feedback<ul style="list-style-type: none">• 35 community meetings• Survey sent to every sworn officer• Recommend consolidation of existing 10 districts into 5	<ul style="list-style-type: none">• Proposed single line changes to district boundaries• Incorporated new Southern Station• Data focus – determine which factors are most key• Customer engagement<ul style="list-style-type: none">• Working groups, Focus Groups, Steering Committee• 90-day public period after submission to Commission

PROJECT TIMELINE

SF Admin Code 2A.86 legislative deadlines

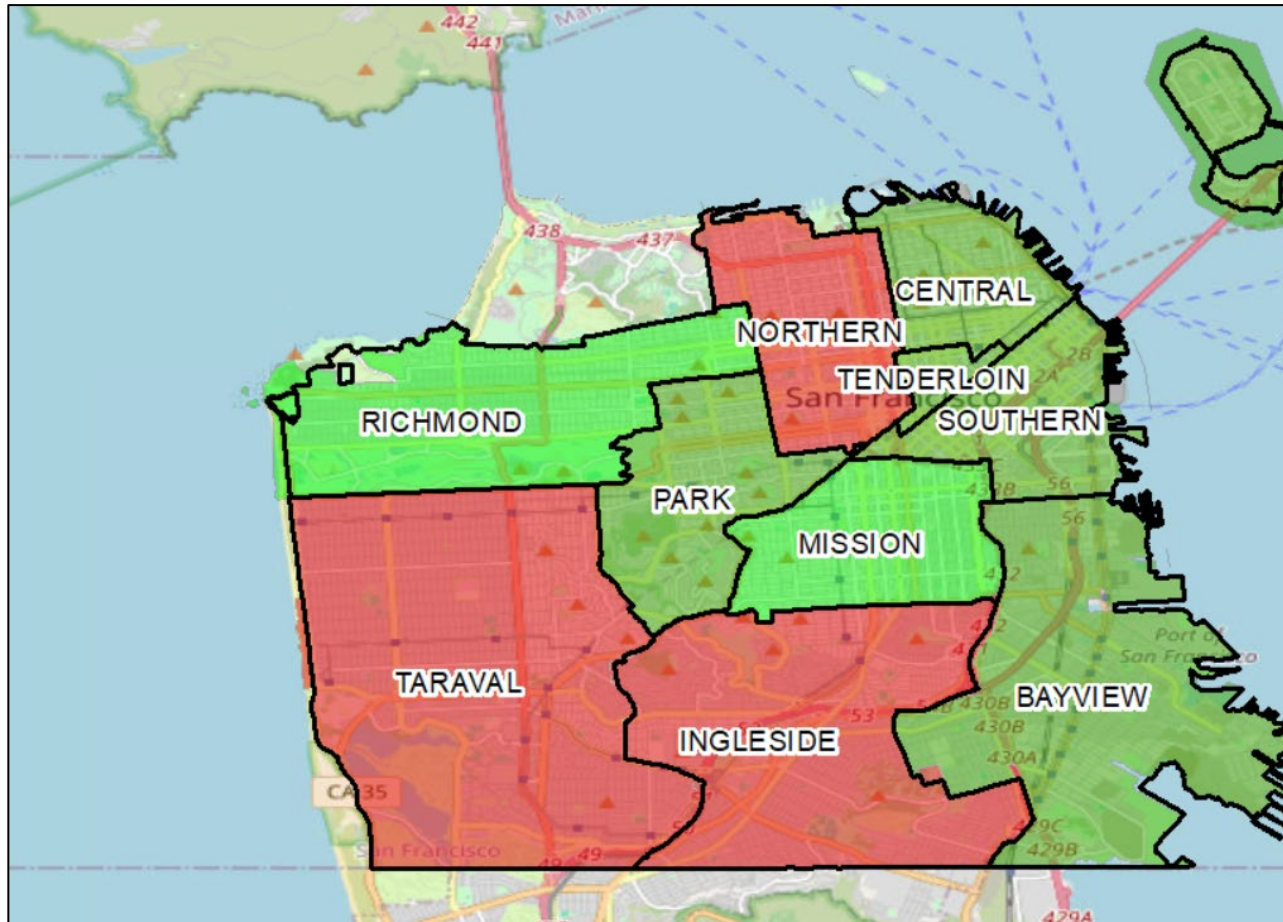
Work Plan Delivery	Work Plan Execution	Complete Review Delivery	Commission Approval	Boundary Change No Later Than
1 Jan 2024	Jan 2024 – Jan 2025	1 Jan 2025	1 Apr 2025 (earliest)	1 Jul 2026

- ★ Police Commission led Public Comment period
 - Pass on recommendation to the Mayor and the Board of Supervisors
 - Postings required, possible hearings, testimony
 - 90 days min.
- ★ Police Commission with Chief set effective date for new boundaries within 18 months of initial proposal

Data Collection

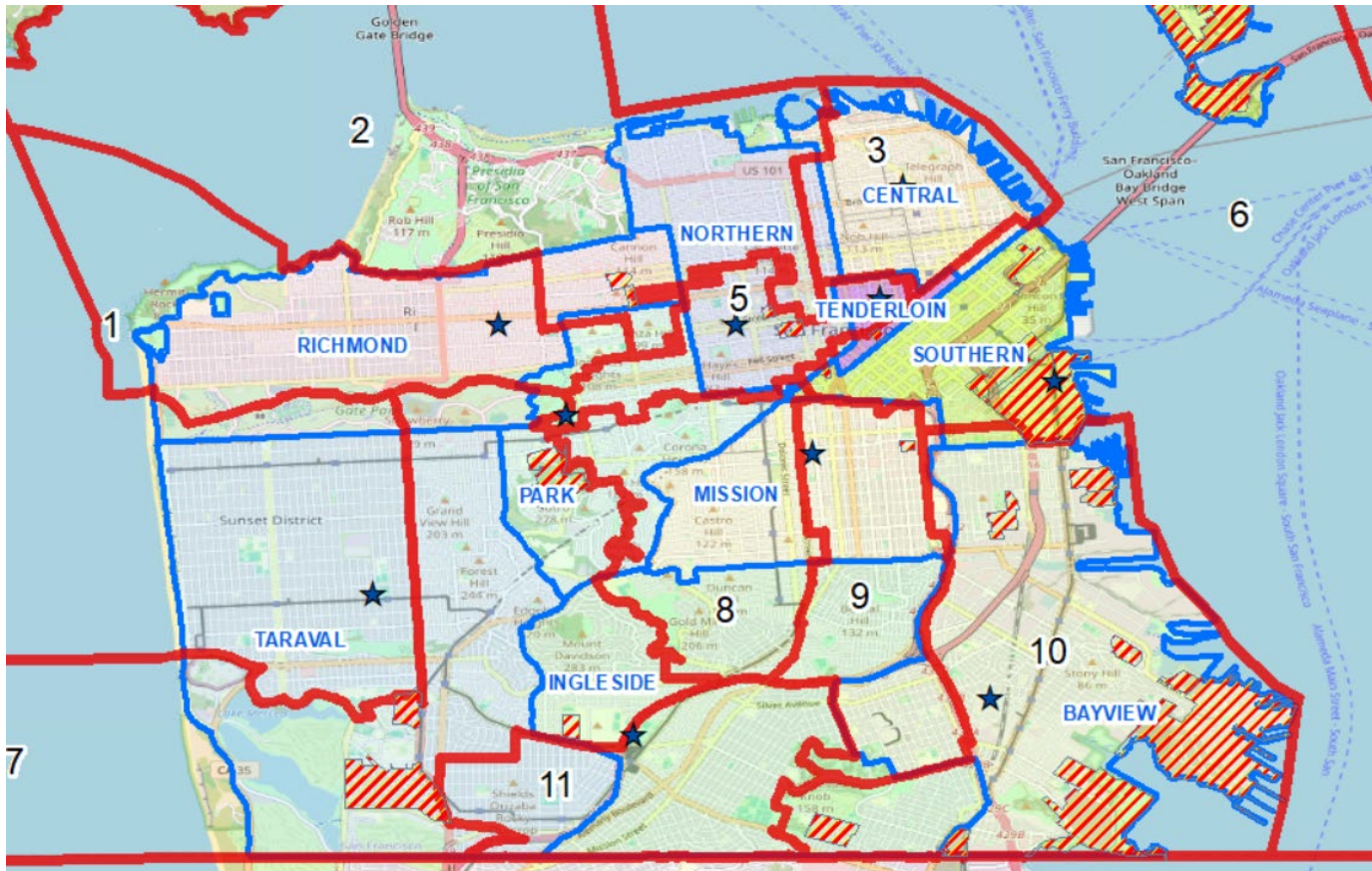
SOME GLIMPSES

POPULATION BY DISTRICT – 2020 CENSUS



Police Districts	Total	% of Total
BAYVIEW	73,864	8.45%
CENTRAL	69,929	8.00%
INGLESIDE	136,564	15.63%
MISSION	81,785	9.36%
NORTHERN	103,787	11.88%
PARK	63,325	7.25%
RICHMOND	87,094	9.97%
SOUTHERN	65,115	7.45%
TARAVAL	153,038	17.51%
TENDERLOIN	35,841	4.10%
PRESIDIO	3,798	0.43%
City/County	873,950	100%

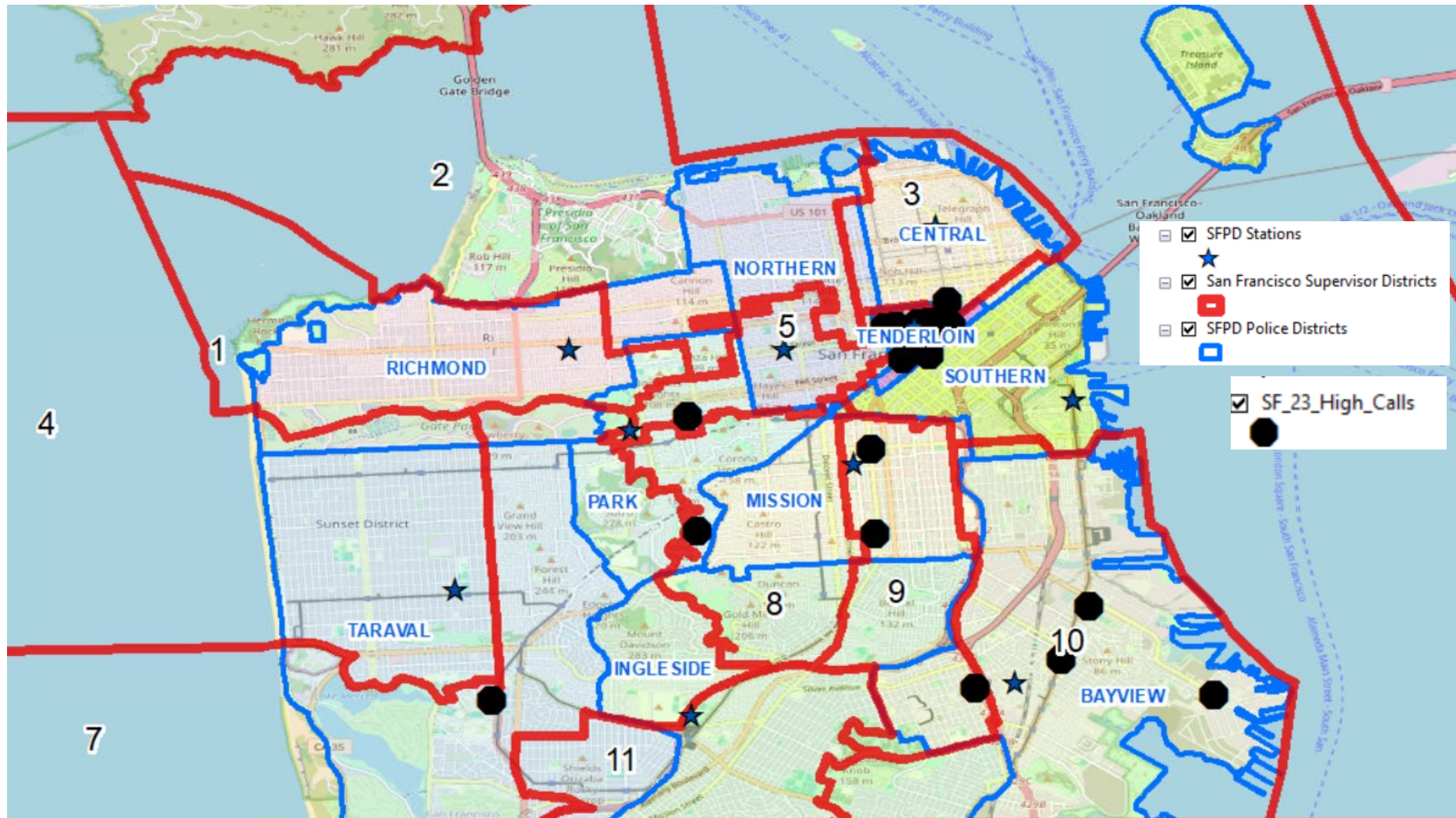
PLANNED NEW DEVELOPMENTS



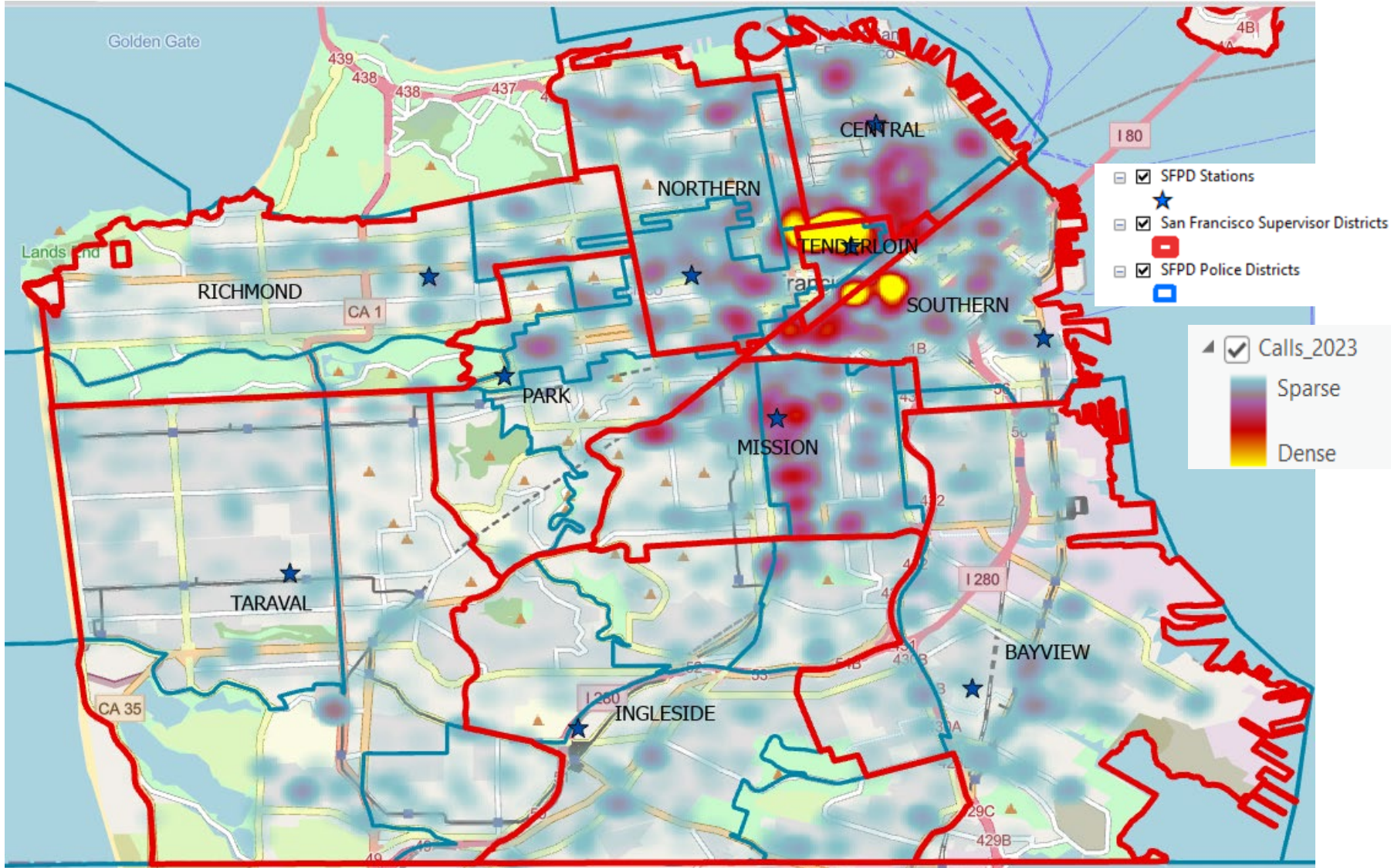
- SFPD Stations
- San Francisco Supervisor Districts
- SFPD Police Districts

- 3333 California ST
- 5M
- Balboa Reservoir
- Freedom West
- HOPE SF Potrero
- HOPE SF Sunnydale
- HOPE SF Hunters View
- India Basin
- Mission Rock
- Parkmerced
- Pier 70
- Brady Block / Plumbers Union
- Potrero Power Station
- Potrero Yards
- Presidio Yards
- Visitation Valley / Schlage Lock
- Stonestown
- Treasure Island / Yerba Buena Island
- Candlestick / Hunters Point Shipyard II
- Hunters Point Shipyard I
- Plaza East
- Transbay Zone 1
- UCSF Parnassus
- Mission Bay South
- Mission Bay North
- Trinity Plaza

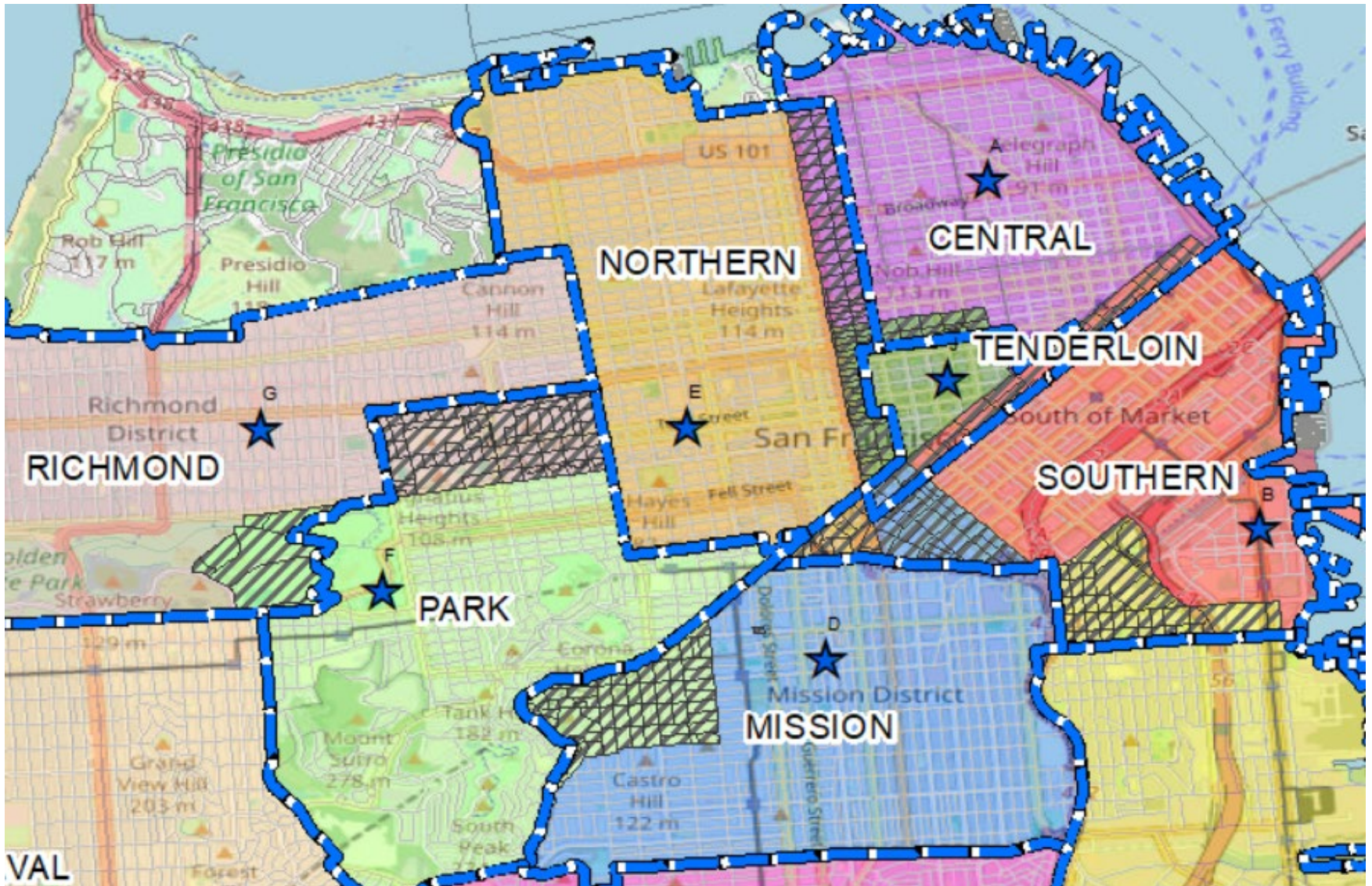
TOP 20 CALL LOCATIONS BY CALL VOLUME (2023)



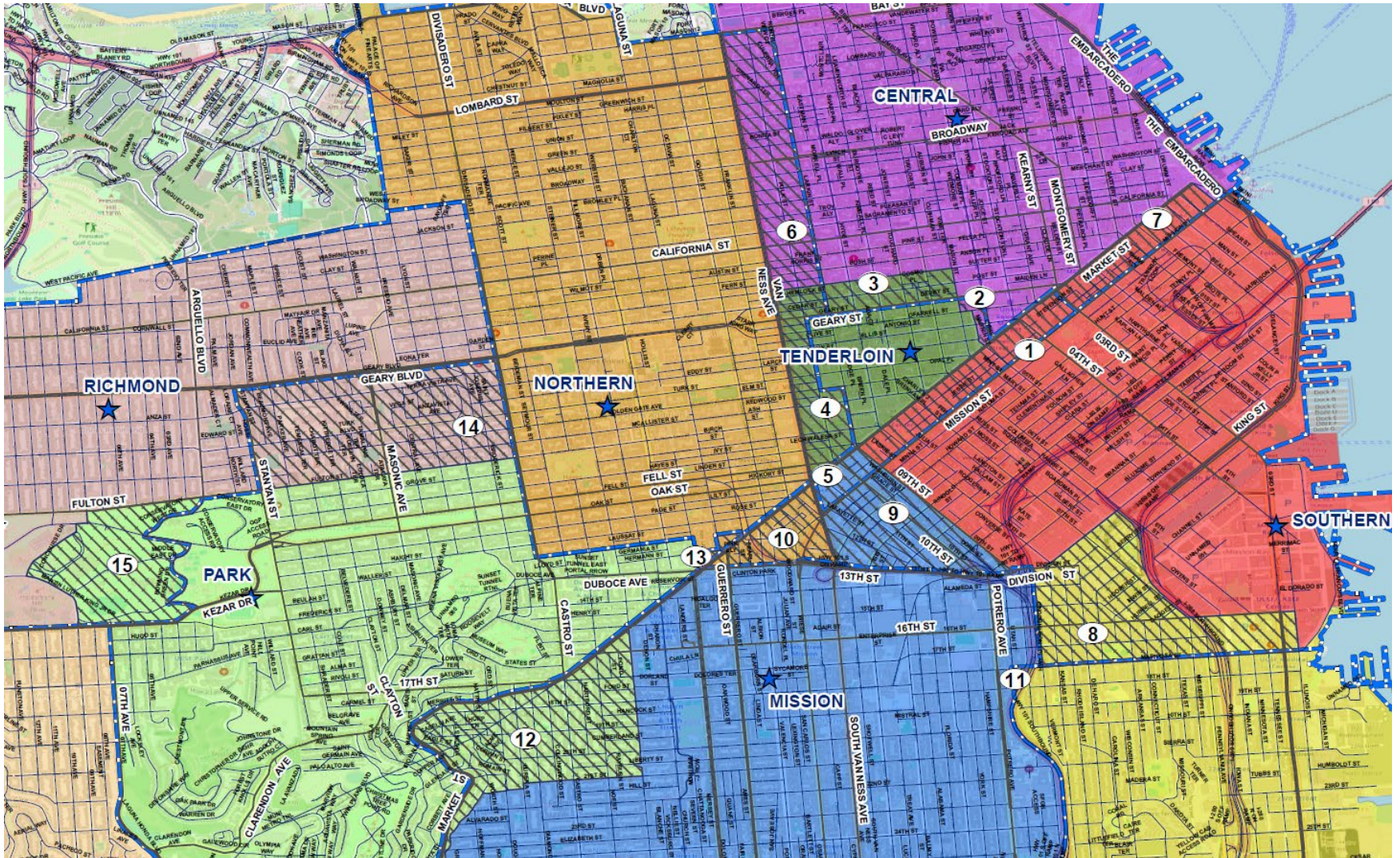
HEAT MAP FOR ALL 911 CALLS (2023)



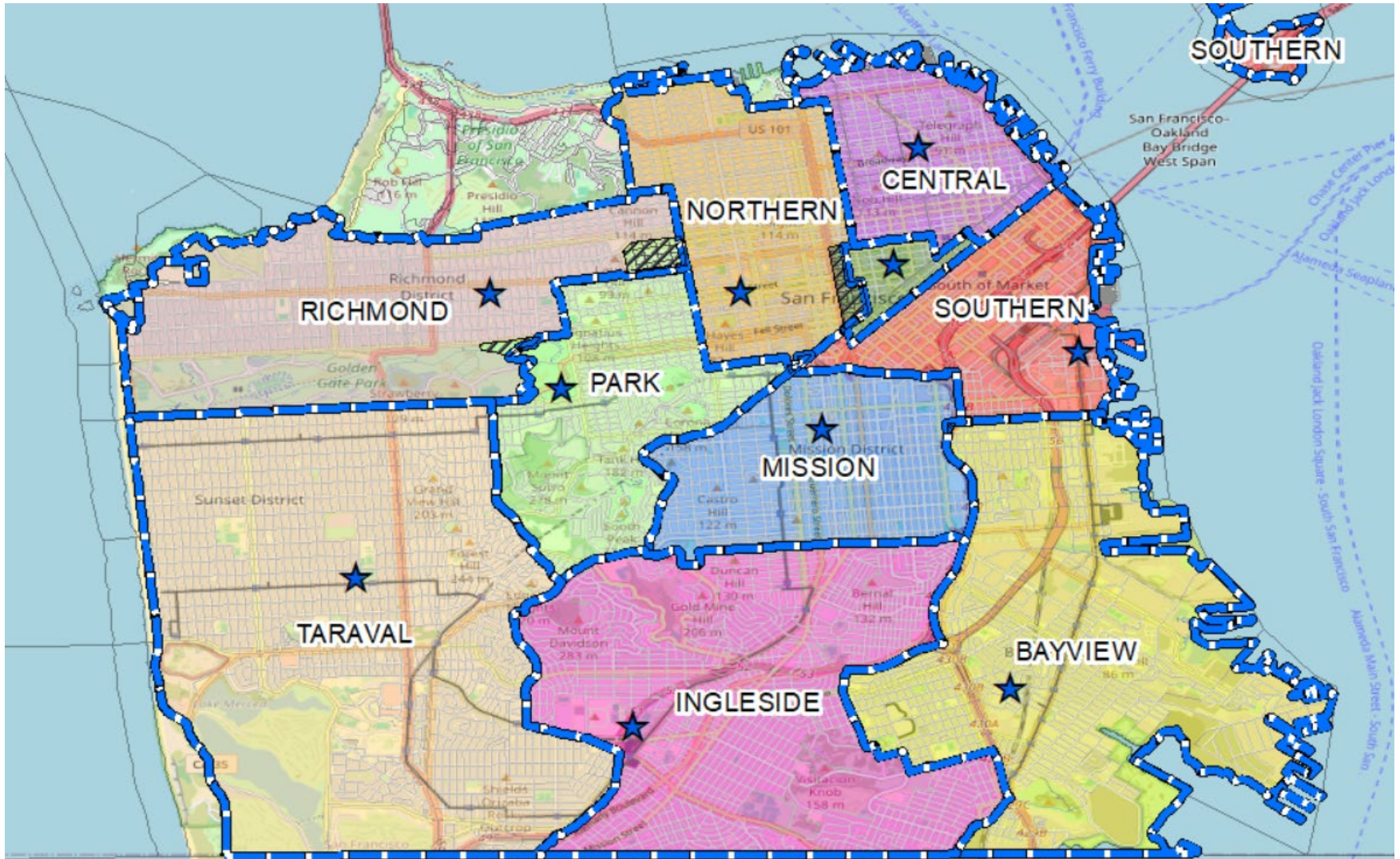
SFPD PROPOSED MAP #1



SFPD PROPOSED MAP #1



SFPD PROPOSED MAP #2



SFPD PROPOSED MAP #2

A – From Northern to Tenderloin – boundary moves to Van Ness

B – From Park to Northern – boundary moves to Market St.

C – From Bayview to Mission – The area bounded by Utah St and Mariposa St

D – From Richmond to Park – boundary moves to Pine, both sides of Divisadero St. and to Masonic Ave.

E – From Richmond to Park – boundary extends to 8th Ave and JFK Dr

