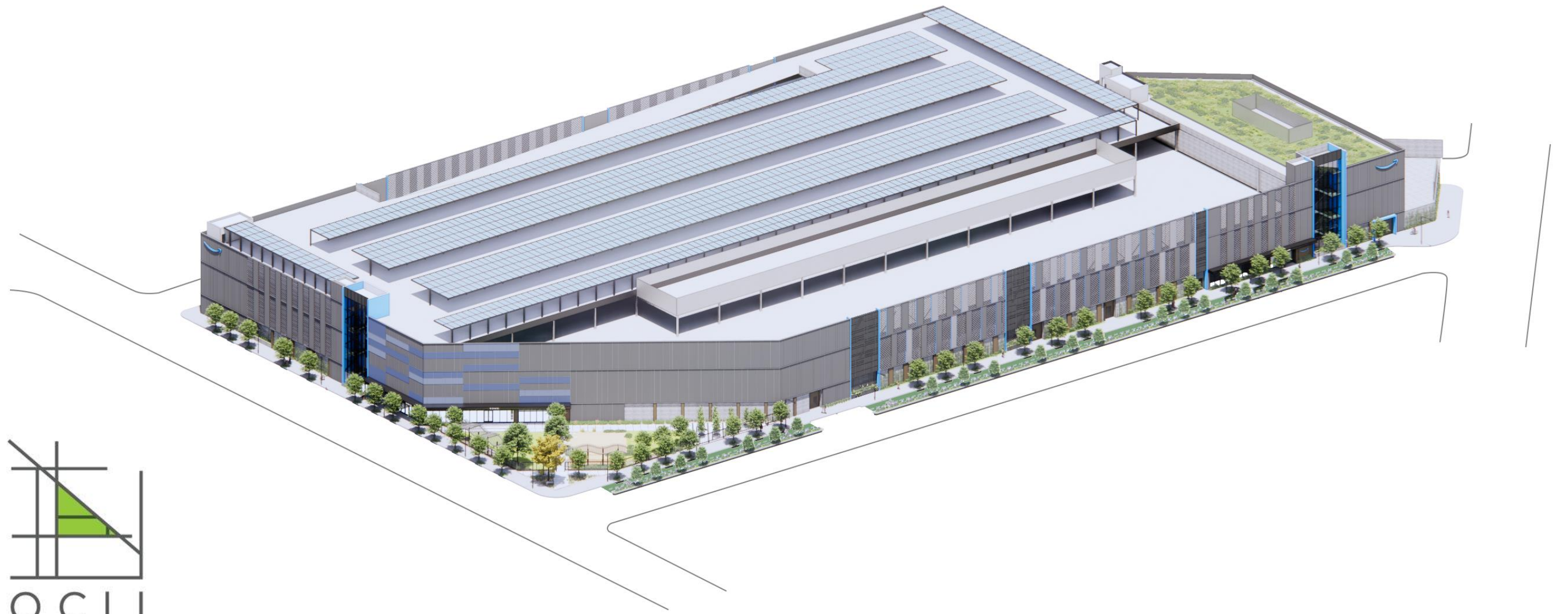


7TH & BERRY PDR FACILITY



office of
COMMUNITY INVESTMENT
and INFRASTRUCTURE

MISSION BAY CITIZENS ADVISORY COMMITTEE
PROJECT DESIGN REVIEW - OCTOBER 10, 2024



Image: San Francisco Business Times

1



7th & Berry (5 Story Condominium)

3



7th & Channel (4 Story Flex PDR)

5



Carolina Facing NW (Existing Industrial)

2



7th Street – Looking E (Railroad & I-280)

4

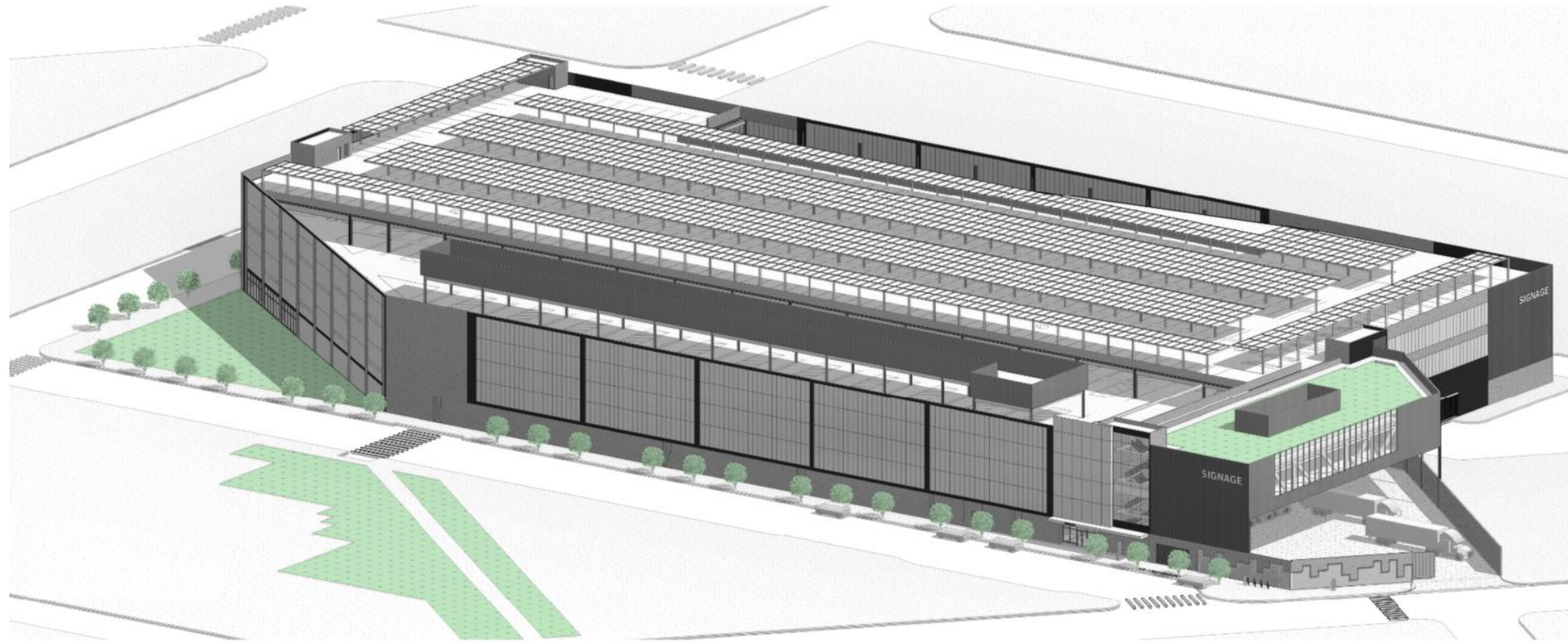


Channel & Carolina (CCA Founders Hall)

6



DeHaro & Berry (4 Story Office)



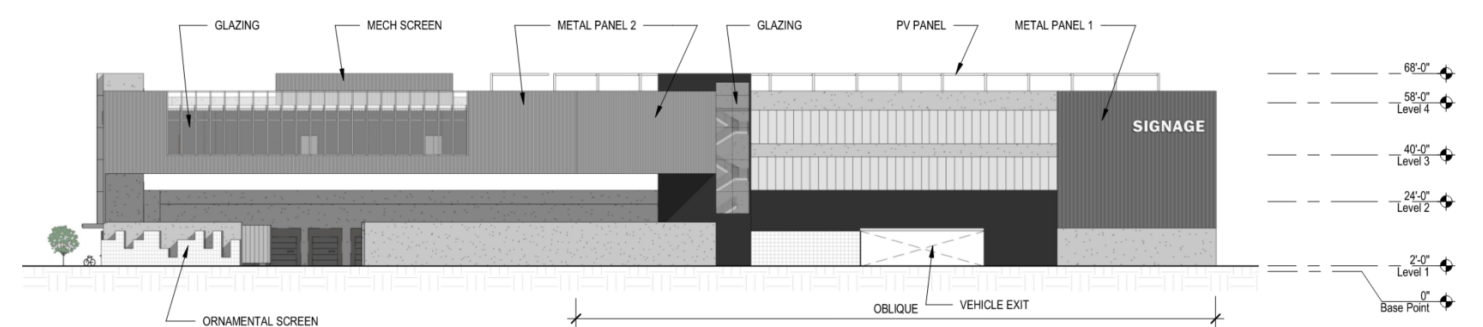
Original Design (2021 - 2022)

Comments Received:

- Develop a connection to the neighborhood, including new public improvements and open spaces.
- Incorporate more vertical elements to balance the overall composition.
- Activate the ground floor, consider the pedestrian experience.
- Review color palette, integrate warmer and more vibrant colors.



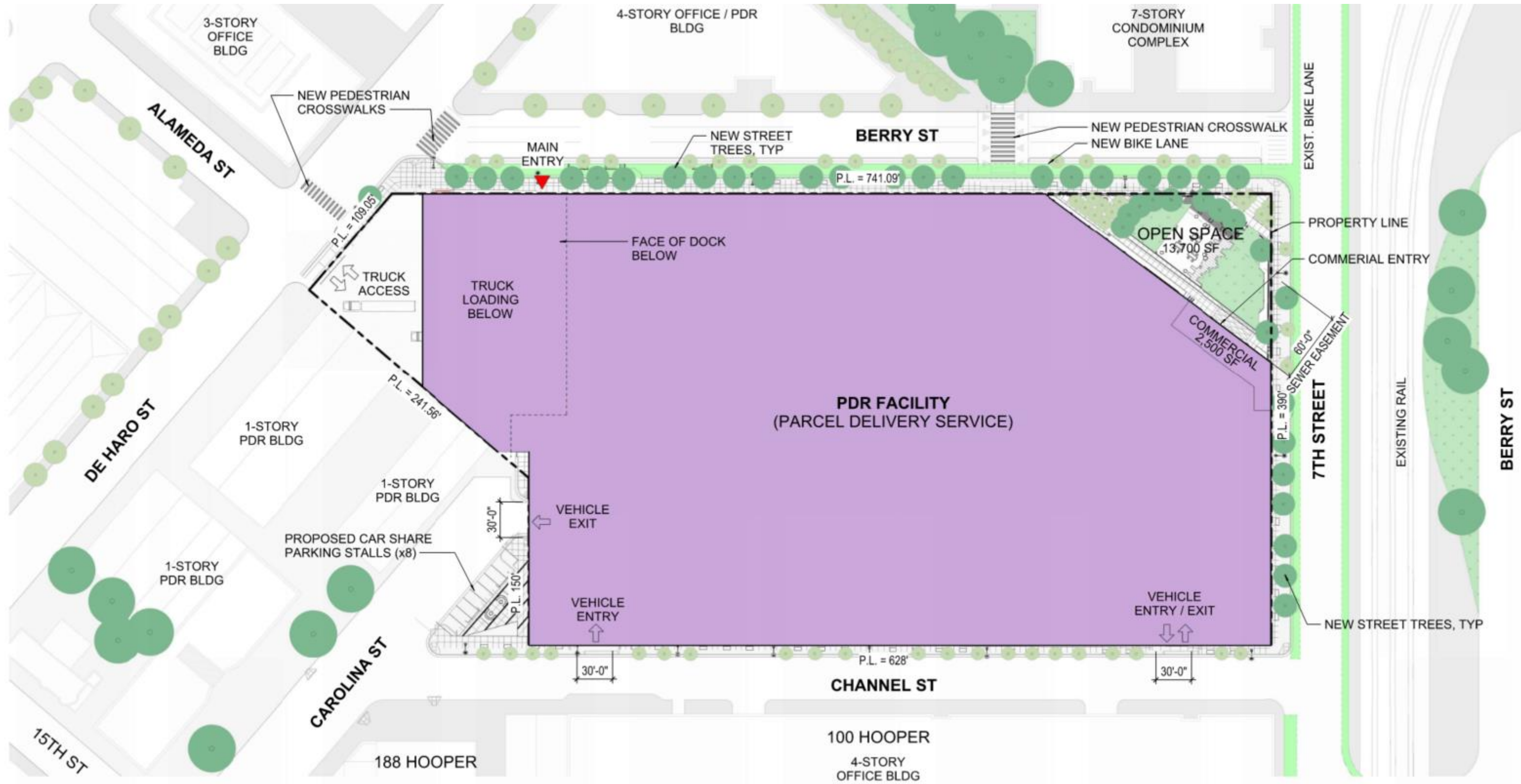
East Elevation - 7th Street



West Elevation - DeHaro Street



North Elevation - Berry Street



1 SITE PLAN
SCALE: 1" = 40'-0"





AERIAL PERSPECTIVE AT 7TH ST AND BERRY



VIEW FROM DEHARO AND BERRY



PUBLIC OPEN SPACE AT 7TH ST AND BERRY



Seating area in public space - aerial perspective



Lawn view looking towards Berry St



Lawn view looking towards 7th St



View along Berry St - Looking East



View at commercial entry along 7th St



View along Berry St - Looking South



North Elevation - Berry St



View at main entry along Berry St



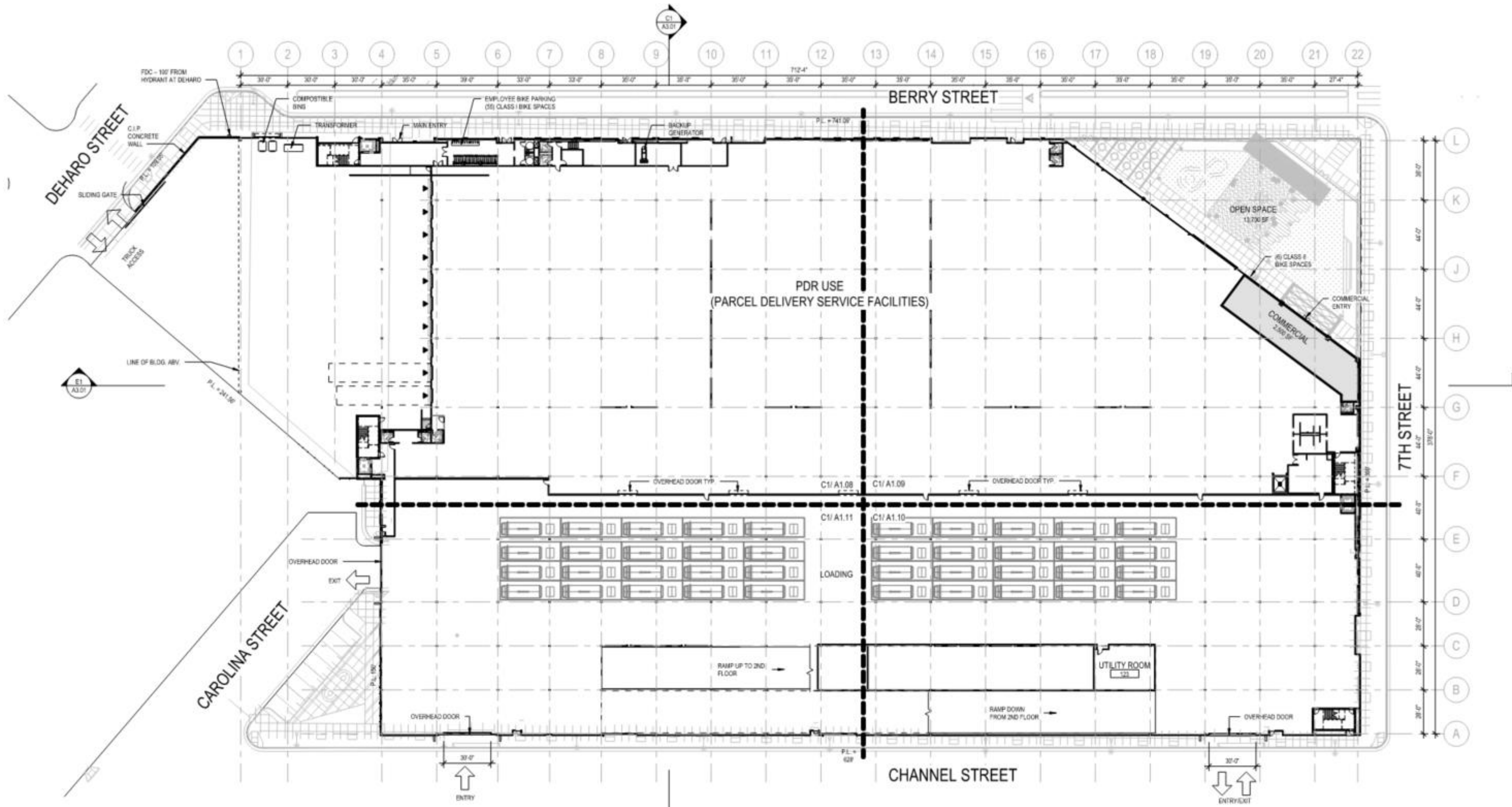
View along Berry St - Looking North



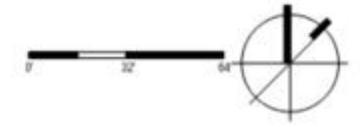
View along 7th St - Looking West



View along Channel St - Looking North

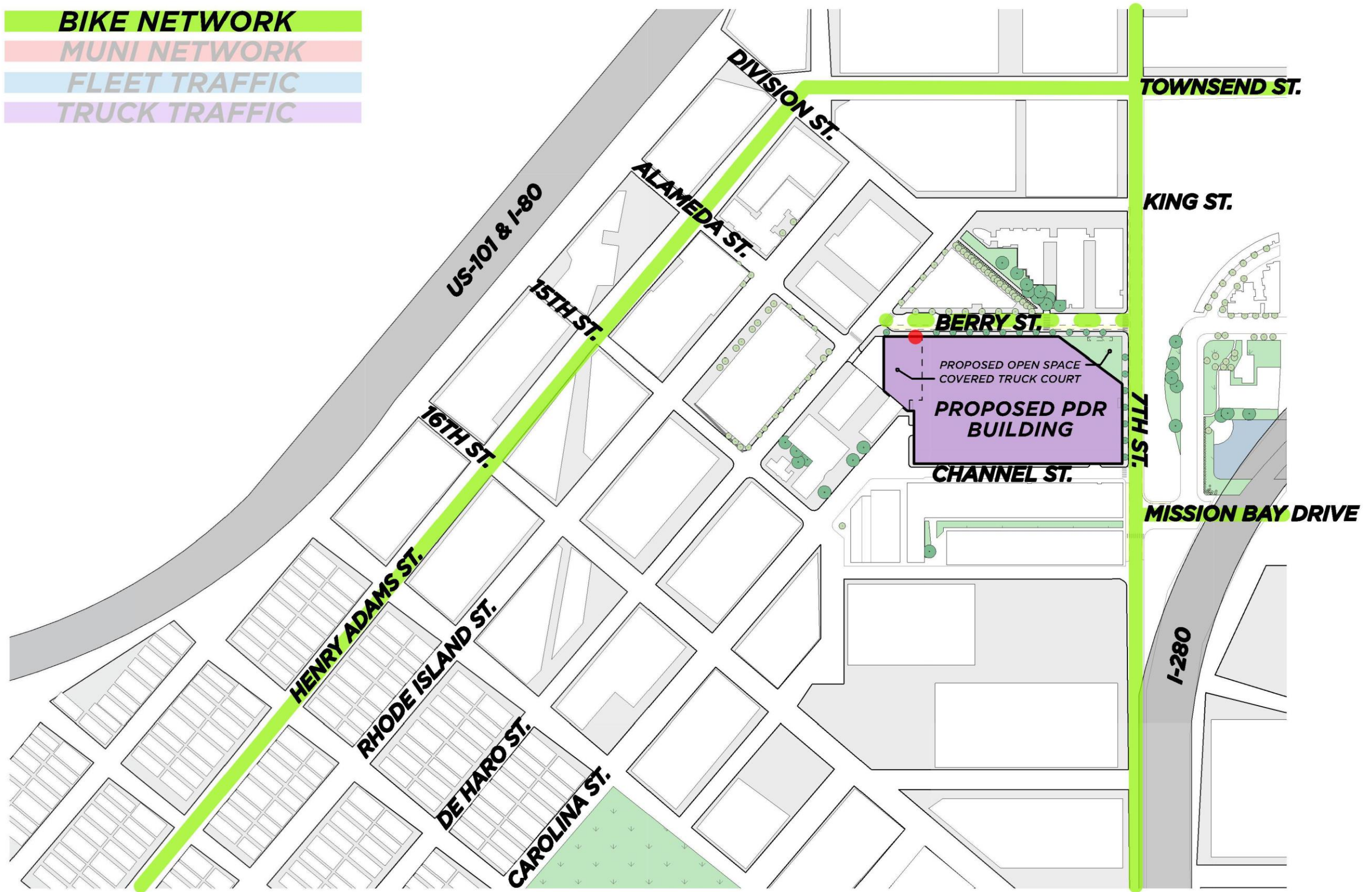


B1 LEVEL 1 FLOOR PLAN
 SCALE: 1/32" = 1'-0"



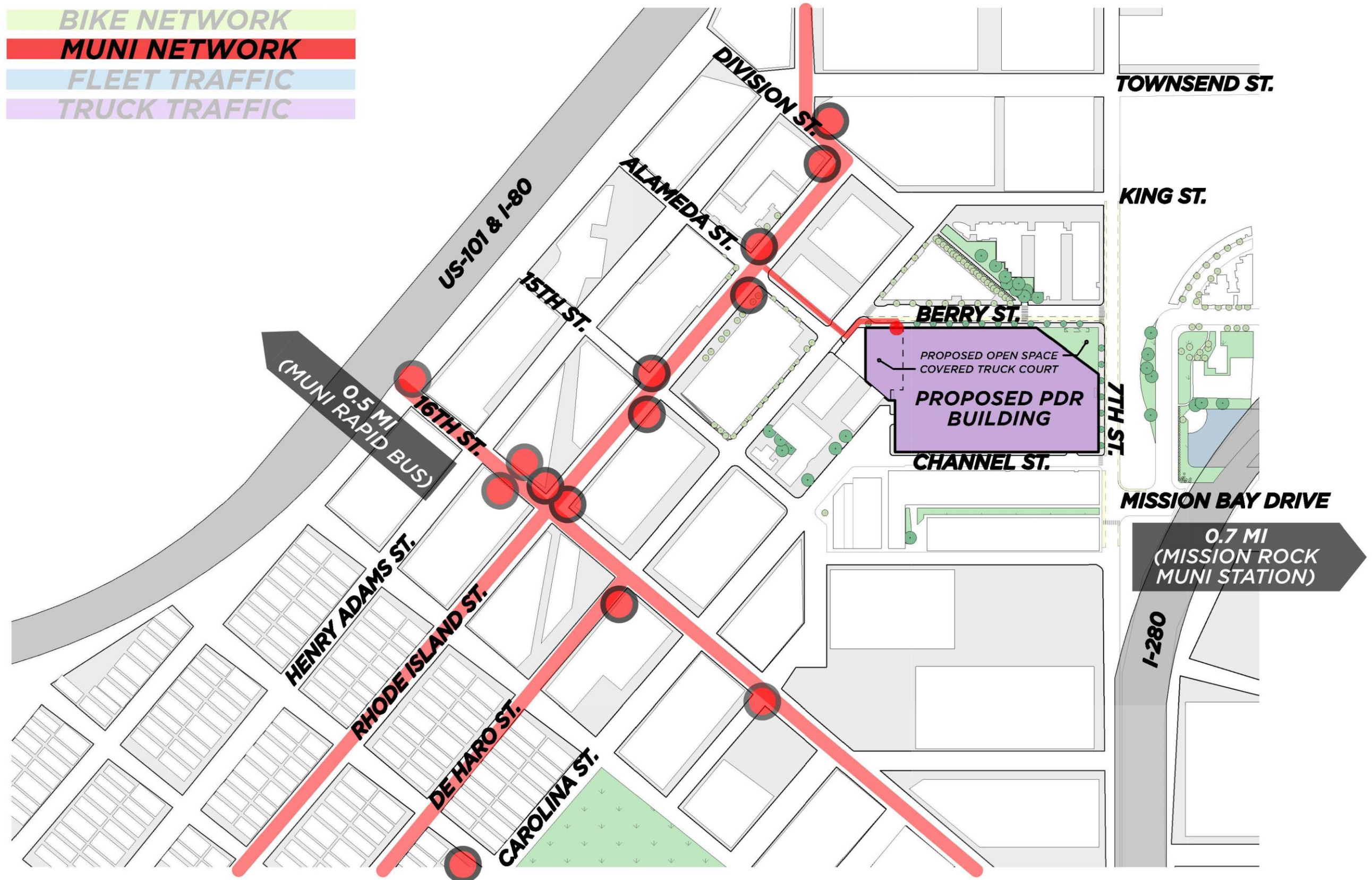
BIKE CIRCULATION

- BIKE NETWORK**
- MUNI NETWORK
- FLEET TRAFFIC
- TRUCK TRAFFIC



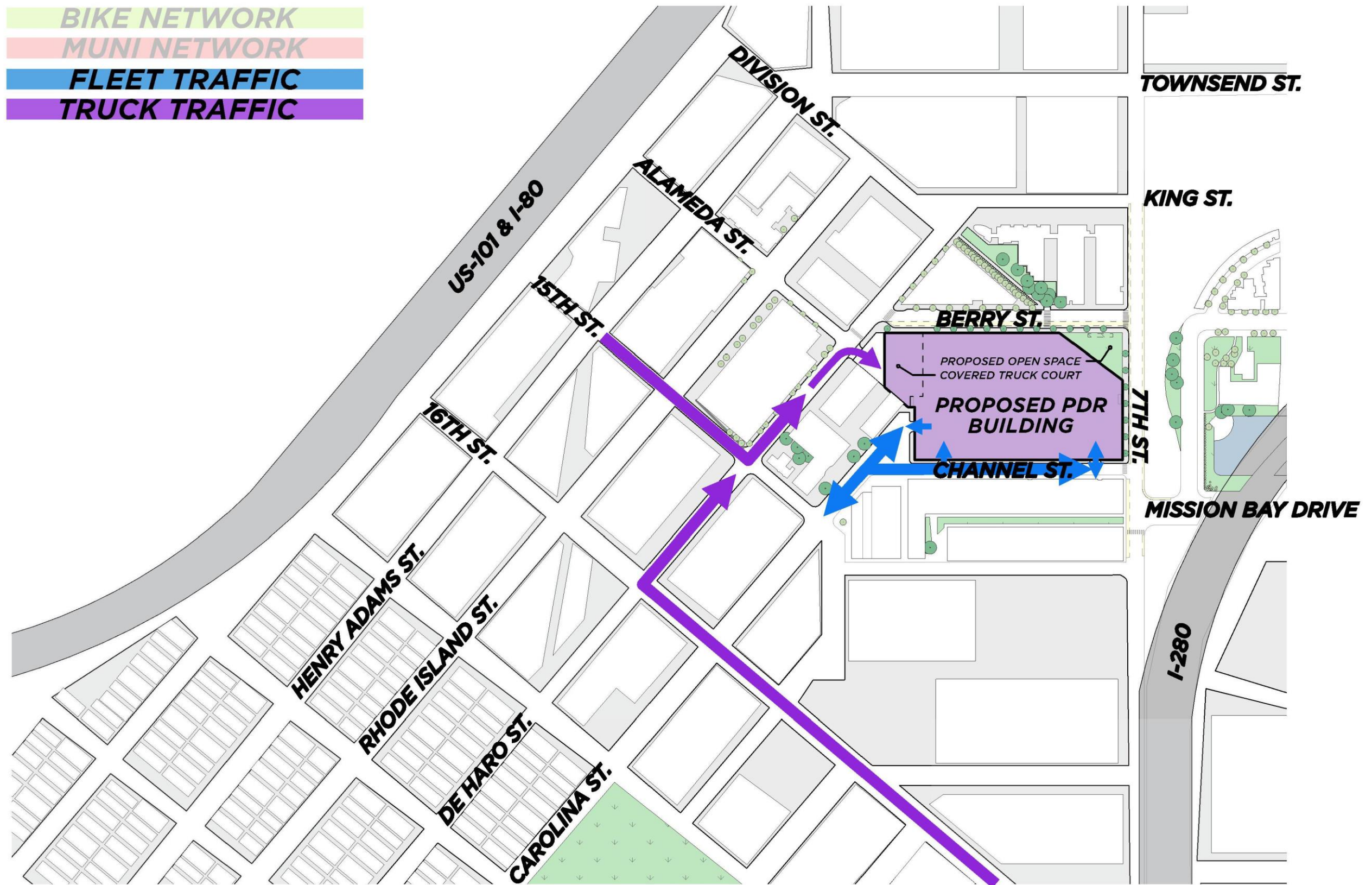
PUBLIC TRANSPORTATION AND PEDESTRIAN CIRCULATION

- BIKE NETWORK
- MUNI NETWORK
- FLEET TRAFFIC
- TRUCK TRAFFIC



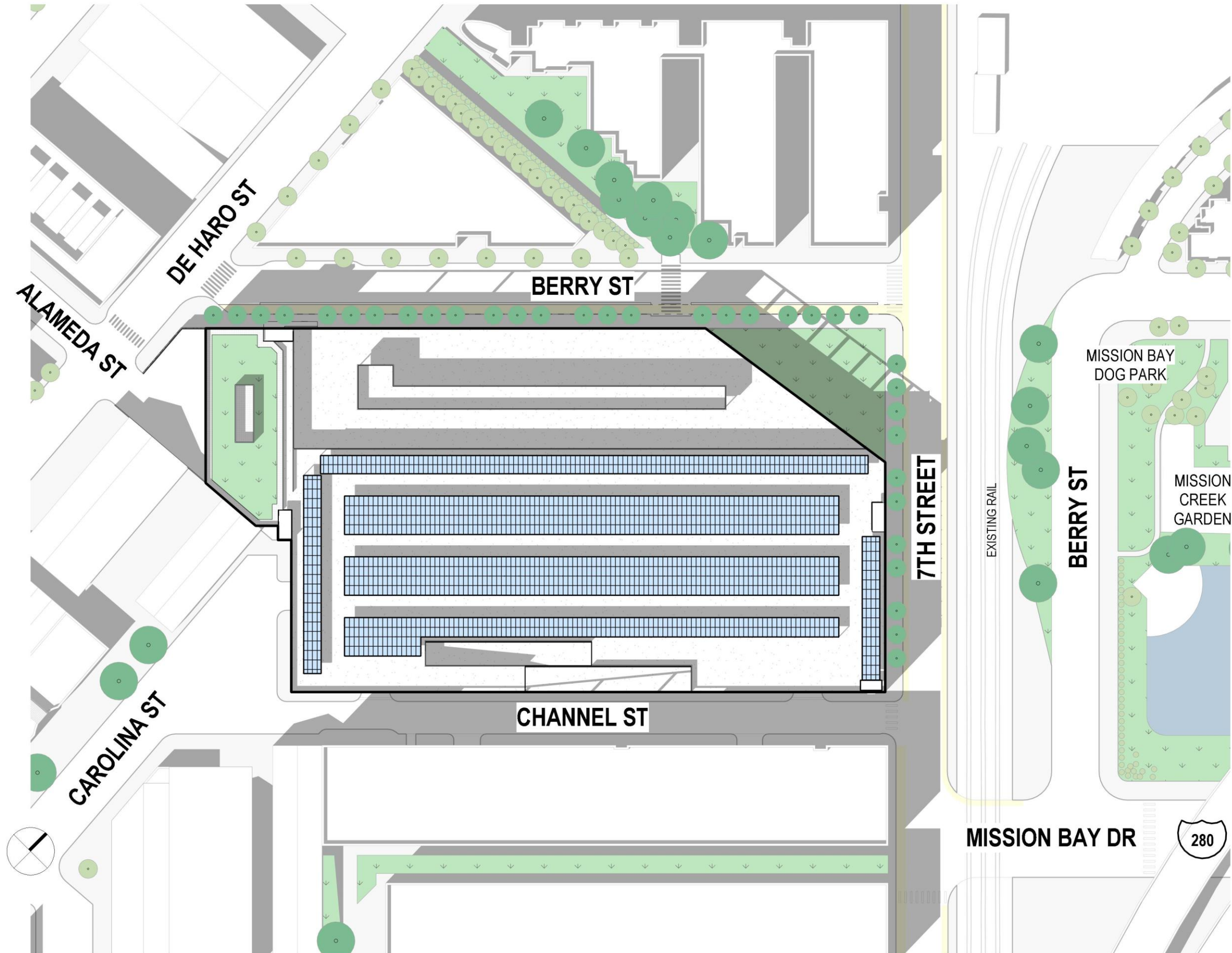
FLEET AND TRUCK CIRCULATION

- BIKE NETWORK
- MUNI NETWORK
- FLEET TRAFFIC
- TRUCK TRAFFIC



SUSTAINABLE FEATURES

-  SOLAR POWER
-  GREEN ROOF
-  STORMWATER MANAGEMENT
WATER CONSERVATION
-  EV READY FACILITY
-  ENERGY-EFFICIENT
BUILDING SYSTEMS
-  OPEN SPACE
(7TH AND BERRY)
-  PEDESTRIAN AND
BIKE IMPROVEMENTS





Questions?