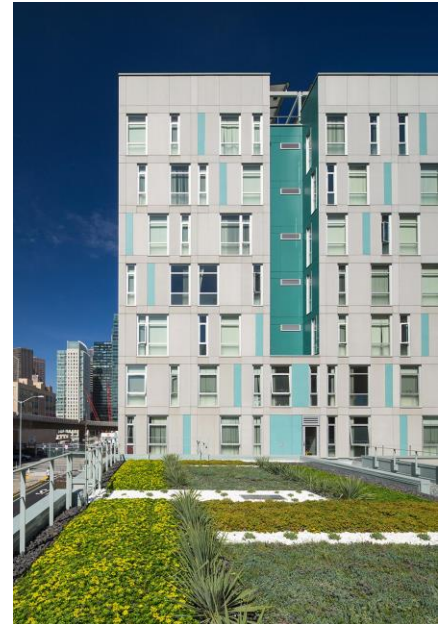


RENE CAZANAVE APARTMENTS - 25 ESSEX STREET TRANSBAY BLOCK 11A



The Rene Cazanave apartments are located on Transbay Block 11A, and were completed in October 2013. The units are home to individuals who formerly experienced homelessness and were referred for housing through the San Francisco Department of Public Health. The development includes mostly studio apartments with some one-bedroom homes interspersed, and also contains a wide range of ground floor programming and retail space. Other building amenities include a private courtyard and open air roof gardens. Rene Cazanave apartments were the first of several development sites that serve as a gateway to OCII's vision of a new "main street" along the Folsom corridor in the Transbay neighborhood.

Rene Cazanave was a longtime community organizer and activist in San Francisco and a Community Housing Partnership Board Member for 20 years. Rene passed away in June 2010.

Project Area	Transbay	Population Type	Supportive Housing for
Project Owner	25 Essex, LP		Formerly Homeless Individuals
Project Sponsor	Community Housing Partnership & BRIDGE Housing	Total Units	120 (108 studios; 12 1-bdrms)
Project Architect	Leddy Maytum Stacy	Total Affordable Units	120
Project Contractor	Cahill	Affordability Levels	50% AMI and below
Construction Start Date	December 2011	OCII or Inclusionary	OCII (includes \$950,000 HOPWA)
Completion Date	October 2013	Non-Housing Amenities	3,400 sf retail; Community/ Multi-purpose Room
Total Development Cost	\$41,307,276		
Total OCII Funding	\$9,708,641	Parking Spaces	
Project Tenure	Permanent Rental		

SBE Professional Services Participation

SBE: 41.2%; SF SBE: 39.3%; MBE: 17.7%; WBE: 15%

SBE Construction Participation

SBE: 38.3%; SF SBE: 16%; MBE: 1.2%; WBE: 1.8%

Construction Workforce Participation

SF Residents: 38%; Minority 58.5%; Women: 3.6%



office of
COMMUNITY INVESTMENT
and INFRASTRUCTURE

📍 One S. Van Ness Ave., 5th Floor, San Francisco, CA 94103

📞 415 749 2400

🏠 www.sfocii.org

1/10/2018